



## BELGRAVE AVENUE, GIDEA PARK

**\*\*\* NO ONWARD CHAIN \*\*\* Spacious Five-Bedroom Semi-Detached Home | Bathroom | Shower Room | Sitting Room | Lounge/Diner | Kitchen/Breakfast Room | G.F.W.C. | Garage | Own Driveway | Rear Garden Approx. 115' | Walking Distance to Gidea Park Elizabeth Line Railway Station |**

**CHARLES STRATTON**  
ESTATE AGENTS

Freehold | 5 bedroom semi-detached house for sale



Substantially extended Five-Bedroom Semi-Detached Home situated in a popular residential turning close to Gidea Park Station and approximately 0.4 miles from Ofsted "Outstanding" rated Ardleigh Green Infant and Junior School.

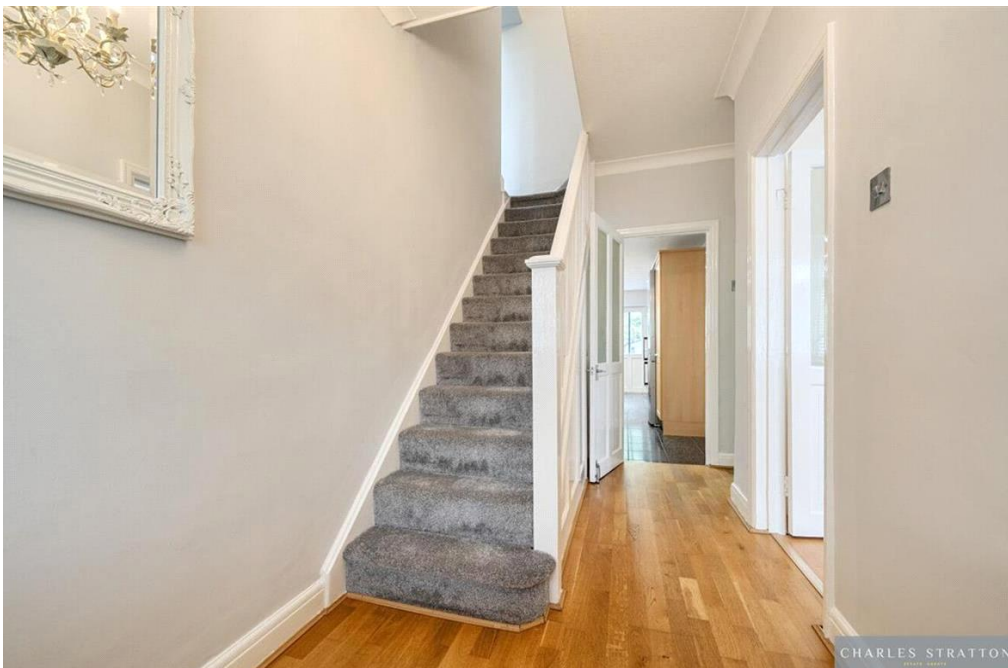
The property has been thoughtfully extended by the existing owner with the addition of a full width rear extension and a two-storey extension to the side.

Accommodation comprises Five Bedrooms, Bathroom W.C., and further Shower Room W.C. to the first floor, whilst to the ground floor there is a Bay-Fronted Sitting Room, Lounge/Diner and a Kitchen/ Breakfast Room that overlook the rear garden, Cloakroom W.C., and Garage.

The front garden has been block paved to provide Off-Street Parking and Own Driveway to the Garage, whilst to the rear there is a large Sun-Terrace and a large garden of approximately 115 feet.

**Council Tax Band: 62 76**

**Tenure: Freehold**





## Belgrave Avenue, Romford, RM2

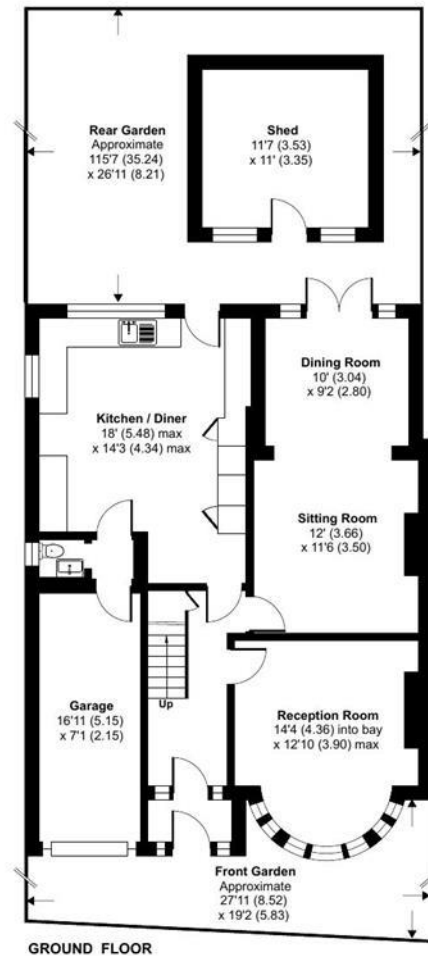
Approximate Area = 1507 sq ft / 140 sq m

Garage = 122 sq ft / 11.3 sq m

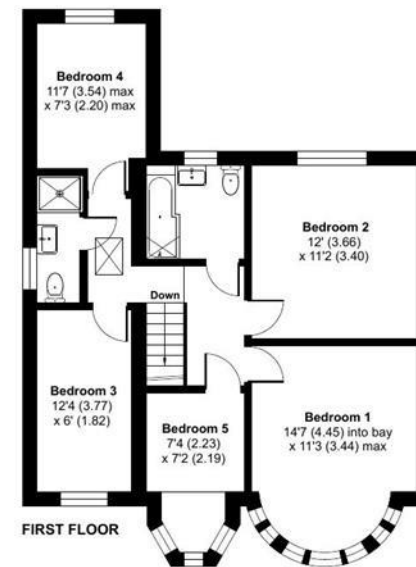
Shed = 127 sq ft / 11.7 sq m

Total = 1756 sq ft / 163 sq m

For identification only - Not to scale



GROUND FLOOR



FIRST FLOOR



Floor plan produced in accordance with RICS Property Measurement 2nd Edition, Incorporating International Property Measurement Standards (IPMS2 Residential). © nichecom 2026. Produced for Charles Stratton Estates Ltd. REF: 1479464

Viewing by appointment only

Charles Stratton Estates Ltd

192 Main Road, Gidea Park, Romford RM2 5HA

Tel: 01708 726 817 Email: [sales@charlesstratton.co.uk](mailto:sales@charlesstratton.co.uk) Website: [www.charlesstratton.co.uk](http://www.charlesstratton.co.uk)

Every care has been taken with the preparation of these particulars, but complete accuracy cannot be guaranteed. If there is any point, which is of particular importance to you, please obtain professional confirmation. Alternatively, we will be pleased to check the information for you. These Particulars do not constitute a contract or part of a contract. The Fixtures, Fittings & Appliances have not been tested and therefore no guarantee can be given that they are in working order. Photographs are reproduced for general information and it cannot be inferred that any item shown is included in the sale. For any information regarding broadband and mobile phone signals go to OfCom via this link - <https://checker.ofcom.org.uk/>