



## EASTERN ROAD, ROMFORD

**One Bedroom Top Floor Flat | Short Walk to Romford Elizabeth Line Station and Shopping Centre | Lounge | Kitchenette | Bedroom | Shower Room W.C. | Communal Parking | Peppercorn Ground Rent | Ideal Investment or First Time Purchase |**



**CHARLES STRATTON**  
ESTATE AGENTS

Leasehold | 1 bedroom flat for sale



One Bedroom Top Floor Flat situated in a convenient position for Romford's Town Centre with its good selection of Shopping Facilities, Restaurants, Pubs and Bars and Elizabeth Line Railway Station.

Accommodation comprises Lounge with Kitchenette, Bedroom and Shower Room W.C. and further benefits from communal parking.

Council Tax Band: B  
Tenure: Leasehold (110 years)  
Ground Rent: £200 per year  
Service Charge:





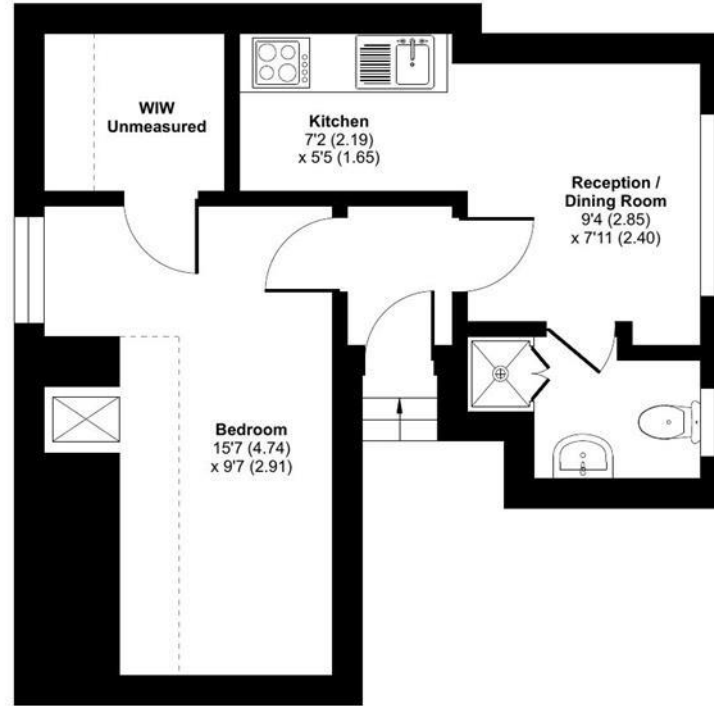


Denotes restricted head height

# Eastern Road, Romford, RM1

Approximate Area = 273 sq ft / 25.4 sq m  
 Limited Use Area(s) = 28 sq ft / 2.60 sq m  
 Total = 301 sq ft / 27.9 sq m

For identification only - Not to scale



SECOND FLOOR



Floor plan produced in accordance with RICS Property Measurement 2nd Edition, Incorporating International Property Measurement Standards (IPMS2 Residential). © nchecom 2026. Produced for Charles Stratton Estates Ltd. REF: 1408137

Energy Efficiency Rating		Environmental Impact (CO <sub>2</sub> ) Rating	
Current	Potential	Current	Potential
<small>EU Directive 2002/91/EC</small>		<small>EU Directive 2002/91/EC</small>	

The energy efficiency rating is a measure of the overall efficiency of a home. The higher the rating the more energy efficient the home is and the lower the fuel bills will be.

The environmental impact rating is a measure of a home's impact on the environment in terms of carbon dioxide (CO<sub>2</sub>).

Viewing by appointment only  
 Charles Stratton Estates Ltd

192 Main Road, Gidea Park, Romford RM2 5HA

Tel: 01708 726 817 Email: [sales@charlesstratton.co.uk](mailto:sales@charlesstratton.co.uk) Website: [www.charlesstratton.co.uk](http://www.charlesstratton.co.uk)

Every care has been taken with the preparation of these particulars, but complete accuracy cannot be guaranteed. If there is any point, which is of particular importance to you, please obtain professional confirmation. Alternatively, we will be pleased to check the information for you. These Particulars do not constitute a contract or part of a contract. The Fixtures, Fittings & Appliances have not been tested and therefore no guarantee can be given that they are in working order. Photographs are reproduced for general information and it cannot be inferred that any item shown is included in the sale. For any information regarding broadband and mobile phone signals go to OfCom via this link - <https://checker.ofcom.org.uk/>