



MAIN ROAD, GIDEA PARK

***** NO ONWARD CHAIN ***** Four Bedrooms | Two Reception Rooms | Kitchen | Separate Utility | Ground Floor Shower Room | First Floor Bathroom | Own Drive to Garage | Rear Gardn Approx. 100' X 60' |

£875,000 Freehold | 4 bedroom detached house for sale

CHARLES STRATTON
ESTATE AGENTS



Occupying a generous plot with approximately 63 feet of road frontage and offering potential to extend and enhance the current accommodation (subject to planning approval) is this Four-Bedroom Detached Home situated in a convenient position for local schools, parks, and open spaces, Romford Town Centre and Gidea Park's Crossrail Elizabeth Line Railway Station.

The property is set back from Main Road and is approached by its own driveway which provides off-street parking and leads to the Garage at the side of the property.

The front door opens to the Entrance Hall with doors opening to a dual aspect Lounge, Dining Room, Kitchen with separate Utility, and Ground Floor Shower Room W.C.

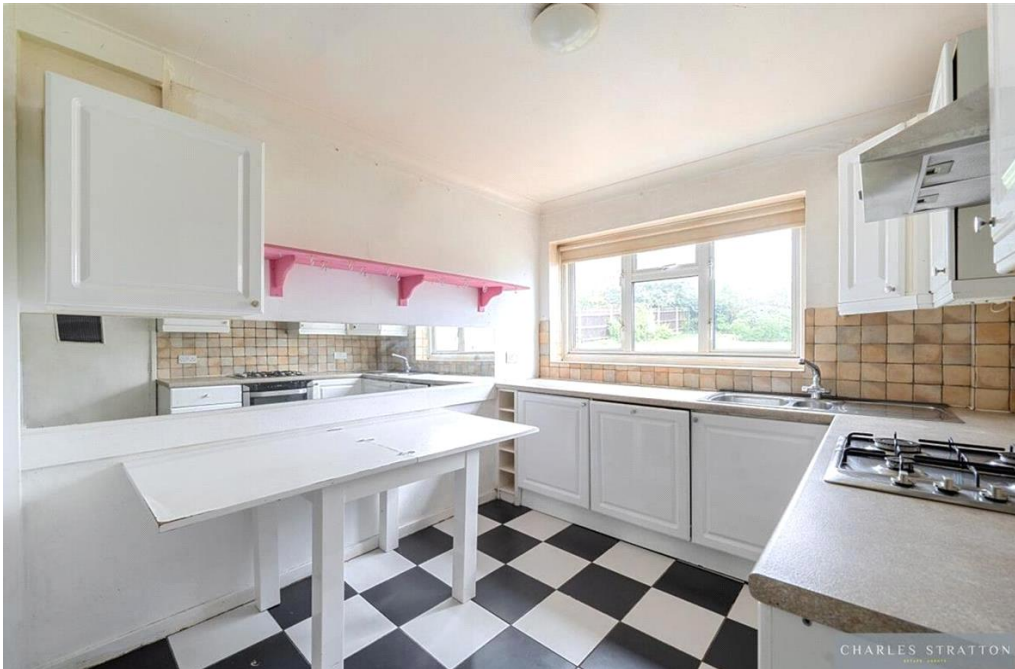
To the first floor there are Four Bedrooms and a Family Bathroom W.C. and further benefits from a rear garden measuring approximately 100 x 60'.

Tenure: Freehold

Parking options: Driveway, Garage, Off Street

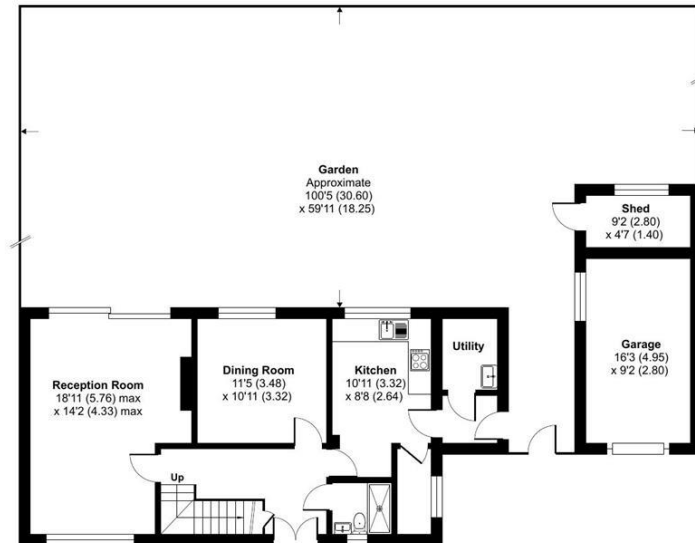
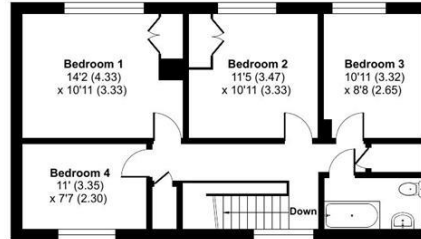
Garden details: Rear Garden





Main Road, Gidea Park, RM2

Approximate Area = 1402 sq ft / 130.2 sq m
 Garage = 149 sq ft / 13.8 sq m
 Outbuilding = 42 sq ft / 3.9 sq m
 Total = 1593 sq ft / 147.9 sq m
 For identification only - Not to scale



ⓘ Floor plan produced in accordance with RICS Property Measurement 2nd Edition, Incorporating International Property Measurement Standards (PMS2 Residential). © nichcom 2026. Produced for Charles Stratton Estates Ltd. REF: 1435455

Energy Efficiency Rating		Environmental Impact (CO ₂) Rating	
Current	Potential	Current	Potential
England & Wales EU Directive 2002/91/EC		England & Wales EU Directive 2002/91/EC	
<small>The energy efficiency rating is a measure of the overall efficiency of a home. The higher the rating the more energy efficient the home is and the lower the fuel bills will be.</small>		<small>The environmental impact rating is a measure of a home's impact on the environment in terms of carbon dioxide (CO₂).</small>	

Viewing by appointment only
 Charles Stratton Estates Ltd

192 Main Road, Gidea Park, Romford RM2 5HA

Tel: 01708 726 817 Email: sales@charlesstratton.co.uk Website: www.charlesstratton.co.uk

Every care has been taken with the preparation of these particulars, but complete accuracy cannot be guaranteed. If there is any point, which is of particular importance to you, please obtain professional confirmation. Alternatively, we will be pleased to check the information for you. These Particulars do not constitute a contract or part of a contract. The Fixtures, Fittings & Appliances have not been tested and therefore no guarantee can be given that they are in working order. Photographs are reproduced for general information and it cannot be inferred that any item shown is included in the sale. For any information regarding broadband and mobile phone signals go to OfCom via this link - <https://checker.ofcom.org.uk/>