



REPTON GARDENS, GIDEA PARK

Five-Bedroom Semi-Detached Home | 2342 Square Feet | Rear Garden Approx. 117' X 42' | Bay-Fronted Lounge | Open-Plan Kitchen/Family Room | Utility/Shower Room | Two En-Suites | Bathroom W.C. | Garage | Generous Driveway Providing Off-Street Parking | Close to Gidea Park's Elizabeth Line Station |



CHARLES STRATTON
ESTATE AGENTS



Substantial Semi-Detached Residence situated in a popular turning close to shops, local schools, amenities, and Gidea Park's Crossrail Elizabeth Line providing excellent rail links into and across Central London to Heathrow Airport.

The front door opens to a large Entrance Porch with coloured leaded light windows and a black and white mosaic tiled floor with a further door opening to the Entrance Hall. Doors open to a Cloakroom W.C., a Bay-Fronted Lounge and a spacious Kitchen/Family Room measuring and impressive 25'7 X 21'5 which extends through Bi-Folding Doors to a large Sun-Terrace and the Rear Gardens. The Kitchen includes a range of modern High-Gloss Furniture with a contrasting Island and fitted appliances which is open-plan to a Sitting Area and Dining Area which welcomes a wealth of natural light throughout. From here a door opens to a Utility with a Shower and further doors open to the Boiler Room and Garage.

To the first floor there are Five Bedrooms , two benefitting from En-Suite facilities and a Four Piece Bathroom W.C.

The property sits amongst a number of homes with good-sized rear gardens which help to create a beautiful sense of space and privacy to the rear which can only be truly appreciated when visiting this exceptional home.

Tenure: Freehold

Parking options: Driveway, Garage

Garden details: Rear Garden





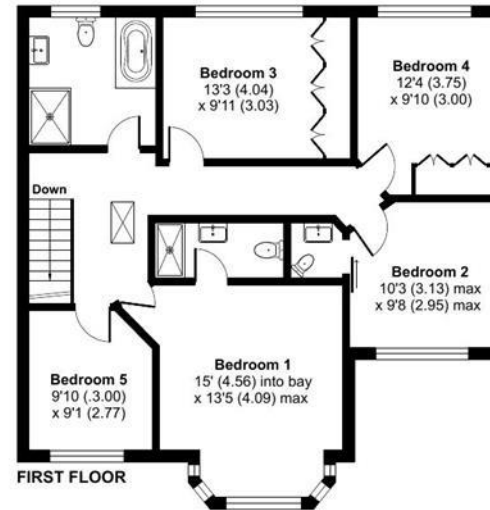
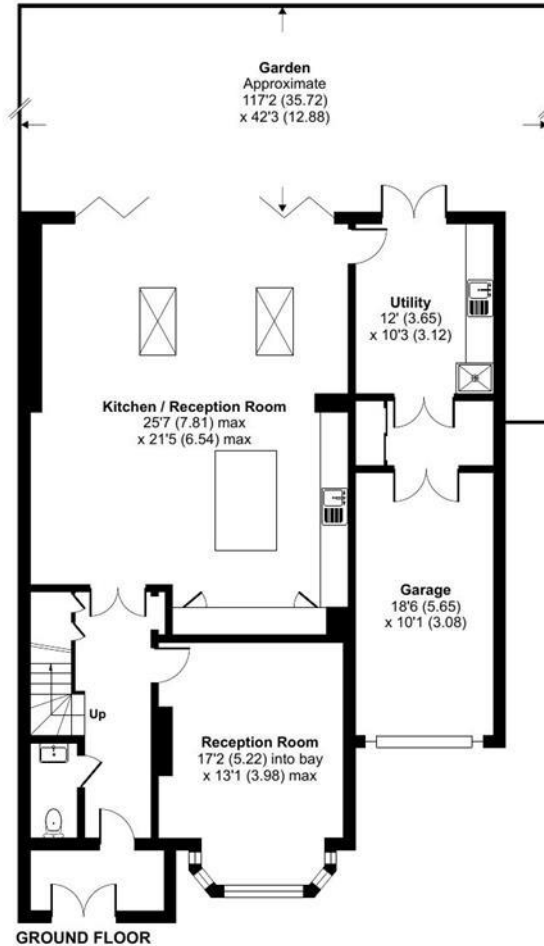
Repton Gardens, Gidea Park, RM2

Approximate Area = 2161 sq ft / 200.7 sq m

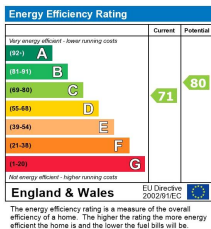
Garage = 181 sq ft / 16.8 sq m

Total = 2342 sq ft / 217.5 sq m

For identification only - Not to scale



Floor plan produced in accordance with RICS Property Measurement 2nd Edition, Incorporating International Property Measurement Standards (IPMS2 Residential). © nichecom 2025. Produced for Charles Stratton Estates Ltd. REF: 1345738



Viewing by appointment only

Charles Stratton Estates Ltd

192 Main Road, Gidea Park, Romford RM2 5HA

Tel: 01708 726 817 Email: sales@charlesstratton.co.uk Website: www.charlesstratton.co.uk/

Every care has been taken with the preparation of these particulars, but complete accuracy cannot be guaranteed. If there is any point, which is of particular importance to you, please obtain professional confirmation. Alternatively, we will be pleased to check the information for you. These Particulars do not constitute a contract or part of a contract. The Fixtures, Fittings & Appliances have not been tested and therefore no guarantee can be given that they are in working order. Photographs are reproduced for general information and it cannot be inferred that any item shown is included in the sale. For any information regarding broadband and mobile phone signals go to OfCom via this link - <https://checker.ofcom.org.uk/>