



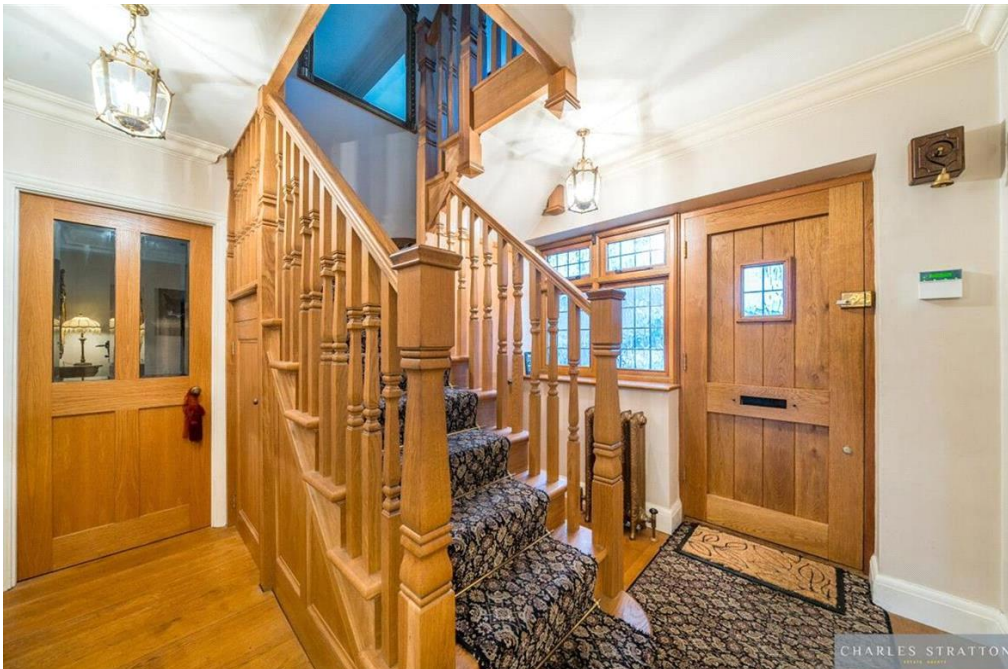
PARKWAY, GIDEA PARK

Three-Bedroom Detached Home | Gidea Park Exhibition Estate | En-Suite to Master Bedroom | Four Piece Family Bathroom | Lounge | Kitchen/Breakfast Room | Conservatory/Living Room/Dining Area | Large Study | G.F.W.C. | Close to Raphaels Park | Own Driveway | No Onward Chain |

£1,000,000



CHARLES STRATTON
ESTATE AGENTS



Three-Bedroom Detached Home situated in a sought-after road on the Gidea Park Exhibition Estate.

Accommodation commences with a Reception Hall with Oak Doors opening to the ground floor accommodation comprising Lounge, Kitchen/Breakfast Room fitted with framed oak kitchen furniture, which opens to a large conservatory encompassing both a Living and Dining Area, a large Study fitted with oak panelling and a Cloakroom W.C.

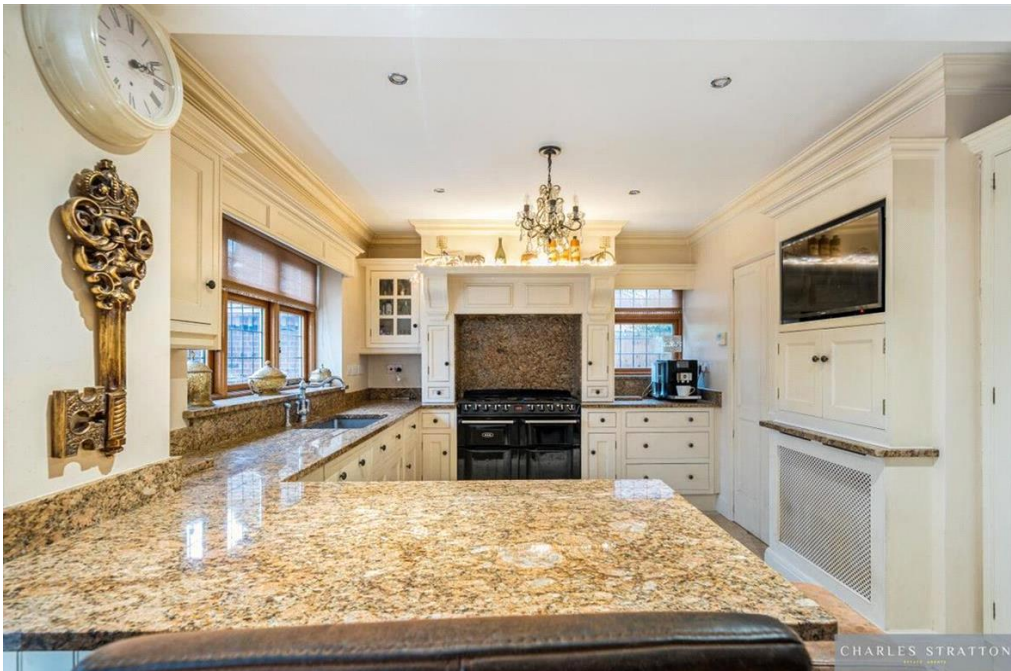
A returning staircase with an Oak Spindle Rail Balustrade and Newel Posts ascends to a large first floor landing with doors opening to three well-proportioned bedrooms, the Master with En-Suite, and a Four Piece Family Bathroom W.C.

Tenure: Freehold

Parking options: Driveway

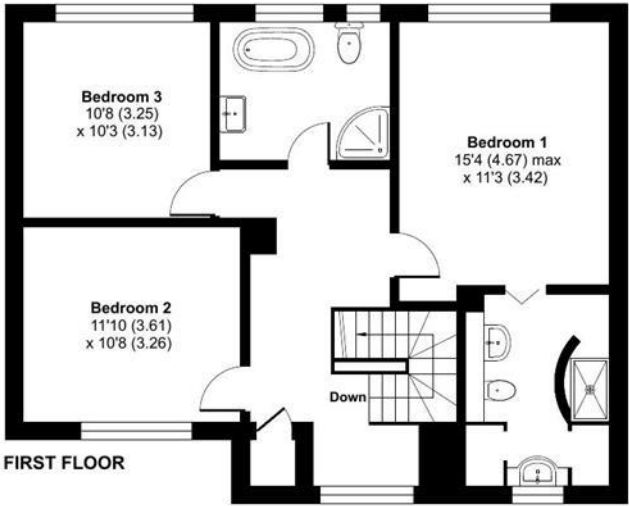
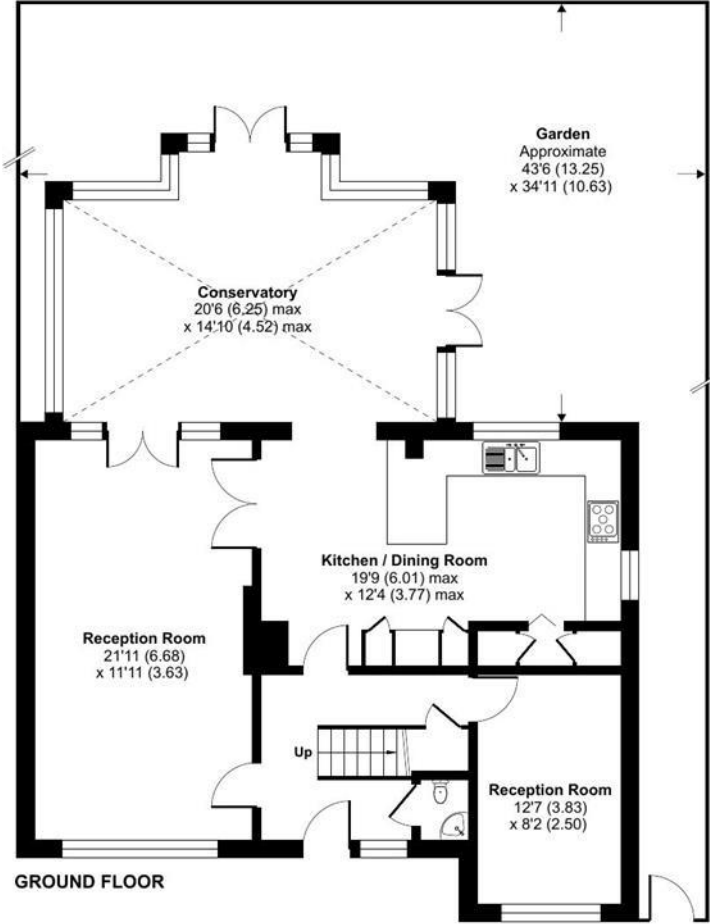
Garden details: Front Garden, Rear Garden



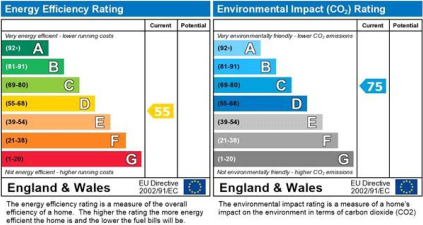


Parkway, Gidea Park , RM2

Approximate Area = 1784 sq ft / 165.7 sq m
For identification only - Not to scale



Floor plan produced in accordance with RICS Property Measurement 2nd Edition, Incorporating International Property Measurement Standards (IPMS2 Residential). © nichecom 2025. Produced for Charles Stratton Estates Ltd. REF: 1394814



Viewing by appointment only
Charles Stratton Estates Ltd

192 Main Road, Gidea Park, Romford RM2 5HA

Tel: 01708 726 817 Email: sales@charlesstratton.co.uk Website: www.charlesstratton.co.uk/

Every care has been taken with the preparation of these particulars, but complete accuracy cannot be guaranteed. If there is any point, which is of particular importance to you, please obtain professional confirmation. Alternatively, we will be pleased to check the information for you. These Particulars do not constitute a contract or part of a contract. The Fixtures, Fittings & Appliances have not been tested and therefore no guarantee can be given that they are in working order. Photographs are reproduced for general information and it cannot be inferred that any item shown is included in the sale. For any information regarding broadband and mobile phone signals go to OfCom via this link - <https://checker.ofcom.org.uk/>