



LODGE AVENUE, GIDEA PARK

Beautifully Presented Three Bedroom First Floor Maisonette | Backing onto Lodge Farm Park | Lounge | Kitchen/Breakfast Room | Bathroom W.C. | Rear Garden | Walking Distance to both Romford and Gidea Park Elizabeth Line Railway Stations | Internal Viewing Highly Recommended |

£375,000 Leasehold | 3 bedroom maisonette for sale



CHARLES STRATTON
ESTATE AGENTS



Situated in a sought-after position backing onto Lodge Farm Park is this well presented Three-Bedroom First Floor Maisonette.

Accommodation comprises Three Bedrooms, Bathroom W.C., Lounge, and Kitchen/Breakfast Room. The property further benefits from a Rear Garden and is conveniently situated for both Romford and Gidea Park's Elizabeth Line Railway Station, Romford's Shopping Centre, and both Lodge Farm and Raphaels Parks.

An internal viewing comes highly recommended to fully appreciate the fine accommodation of offer.

Tenure: Leasehold (99 years)

Ground Rent: £200 per year

Service Charge: £0 per year

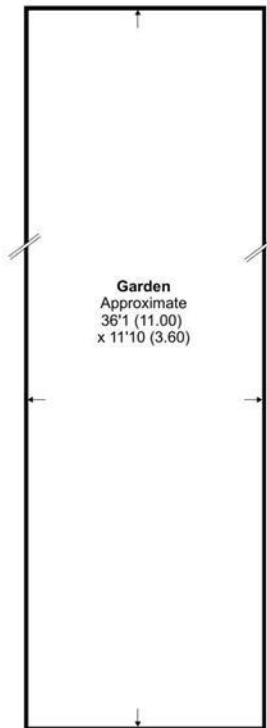




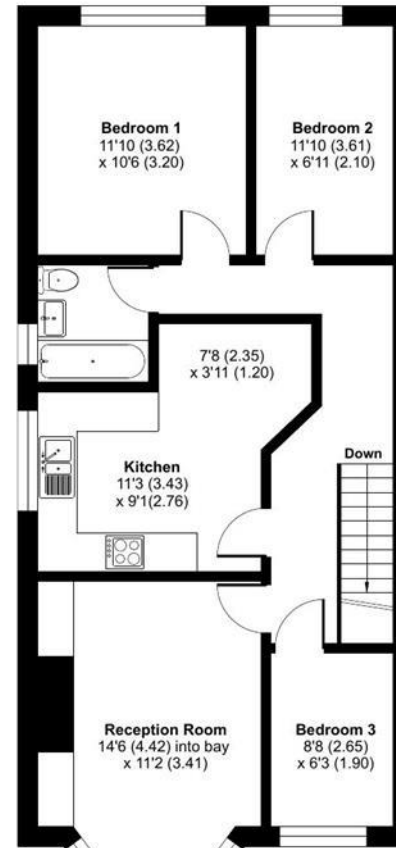
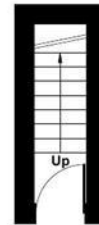
Lodge Avenue, Gidea Park, RM2

Approximate Area = 759 sq ft / 70.5 sq m

For identification only - Not to scale



GROUND FLOOR



FIRST FLOOR



Floor plan produced in accordance with RICS Property Measurement 2nd Edition, Incorporating International Property Measurement Standards (IPMS2 Residential). © nichecom 2026. Produced for Charles Stratton Estates Ltd. REF: 1395960

Viewing by appointment only

Charles Stratton Estates Ltd

192 Main Road, Gidea Park, Romford RM2 5HA

Tel: 01708 726 817 Email: sales@charlesstratton.co.uk Website: www.charlesstratton.co.uk/

Every care has been taken with the preparation of these particulars, but complete accuracy cannot be guaranteed. If there is any point, which is of particular importance to you, please obtain professional confirmation. Alternatively, we will be pleased to check the information for you. These Particulars do not constitute a contract or part of a contract. The Fixtures, Fittings & Appliances have not been tested and therefore no guarantee can be given that they are in working order. Photographs are reproduced for general information and it cannot be inferred that any item shown is included in the sale. For any information regarding broadband and mobile phone signals go to OfCom via this link - <https://checker.ofcom.org.uk/>