



WARNER ROAD, LONDON

Two Bedroom First Floor Warner Flat | Close to Excellent Rail Connections | Close to a number of Ofsted Rated Good Local Schools | Living Room | Kitchen Breakfast Room | Bathroom W.C. | Rear Garden | Central Position for Walthamstow's Local Amenities |

£575,000 2 bedroom apartment for sale



CHARLES STRATTON
ESTATE AGENTS



Beautifully appointed Warner Flat situated in one of the most sought after roads for Warner Flat's, in a convenient position for Blackhorse Road, St. James Street, and Walthamstow Queens Road Stations, the open spaces of Walthamstow Wetlands and Hackney Marshes Circle, and fine selection of Local Shops, Bars and Amenities.

The property is approached by a tiled pathway leading to the front door opening to the Entrance Hall with stairs ascending to the accommodation on the floor where there are Two Bedrooms, Bathroom W.C., Living Room, and Kitchen/Breakfast Room which opens to a balcony overlooking and staircase descending to the Rear Garden.

Parking options: Off Street
Garden details: Rear Garden



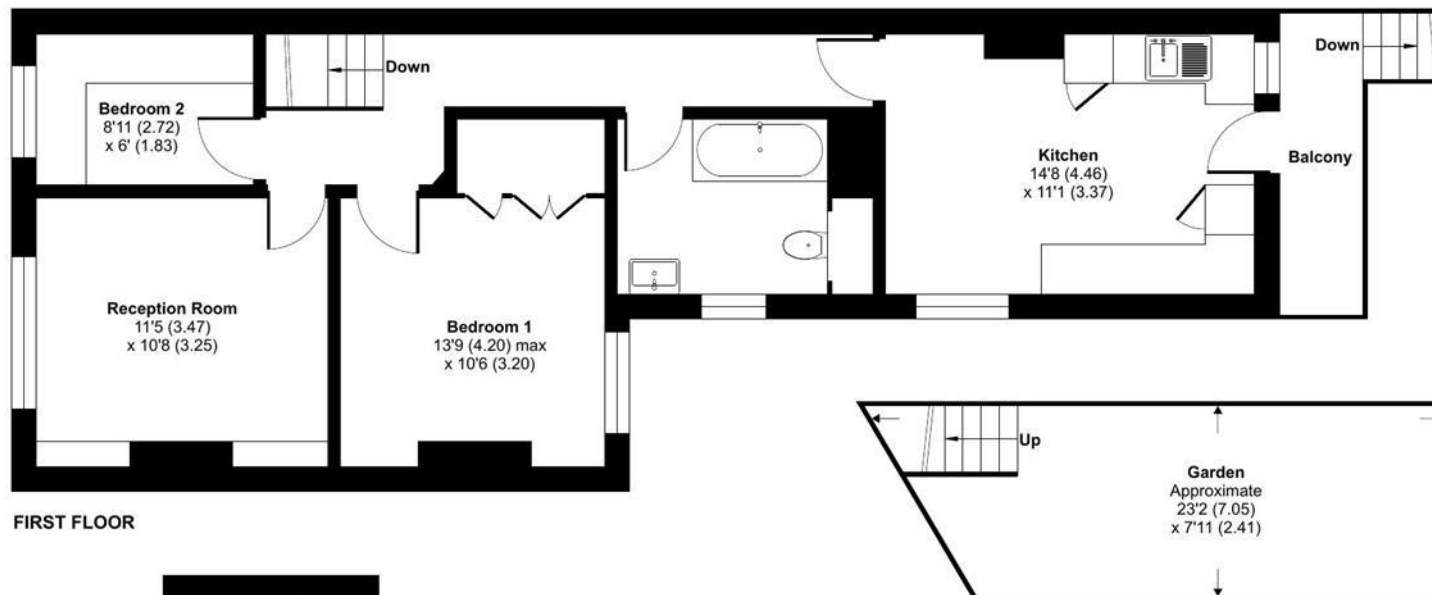




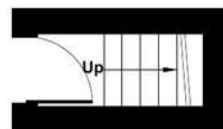
Warner Road, London, E17

Approximate Area = 672 sq ft / 62.4 sq m

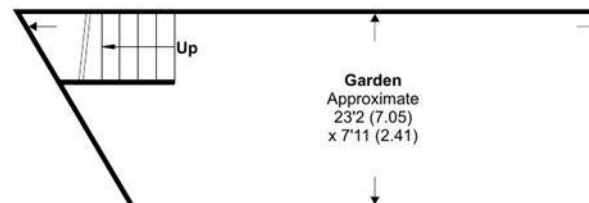
For identification only - Not to scale



FIRST FLOOR



GROUND FLOOR



 Floor plan produced in accordance with RICS Property Measurement 2nd Edition, Incorporating International Property Measurement Standards (IPMS2 Residential). © nichecom 2025. Produced for Charles Stratton Estates Ltd. REF: 1384753

Viewing by appointment only
Charles Stratton Estates Ltd

192 Main Road, Gidea Park, Romford RM2 5HA

Tel: 01708 726 817 Email: sales@charlesstratton.co.uk Website: www.charlesstratton.co.uk/

Every care has been taken with the preparation of these particulars, but complete accuracy cannot be guaranteed. If there is any point, which is of particular importance to you, please obtain professional confirmation. Alternatively, we will be pleased to check the information for you. These Particulars do not constitute a contract or part of a contract. The Fixtures, Fittings & Appliances have not been tested and therefore no guarantee can be given that they are in working order. Photographs are reproduced for general information and it cannot be inferred that any item shown is included in the sale. For any information regarding broadband and mobile phone signals go to OfCom via this link - <https://checker.ofcom.org.uk/>