



## SOUTH STREET, ROMFORD

\*\*\* GUIDE PRICE £500,000 - £550,000 \*\*\* NO ONWARD CHAIN \*\*\* Four/Five Bedroom Edwardian Semi-Detached Home | Two Large Reception Rooms | Kitchen with Seperate Breakfast Room | First Floor Shower Room W.C. | High Ceilings | Close To Romford Town Centre and Elizabeth Line Railway Station |

**Guide Price £500,000** Freehold | 4 bedroom semi-detached house for sale

CHARLES STRATTON  
ESTATE AGENTS

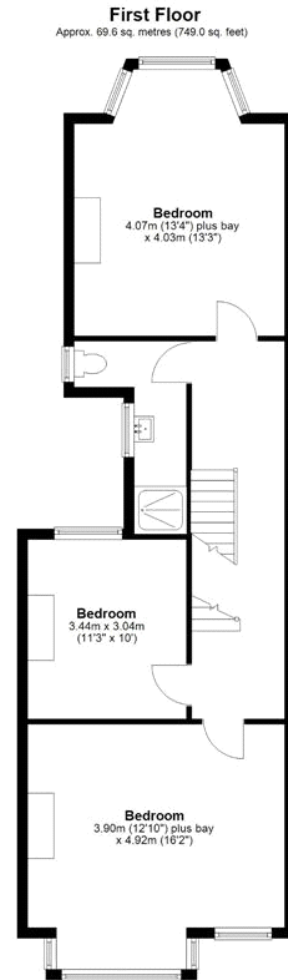
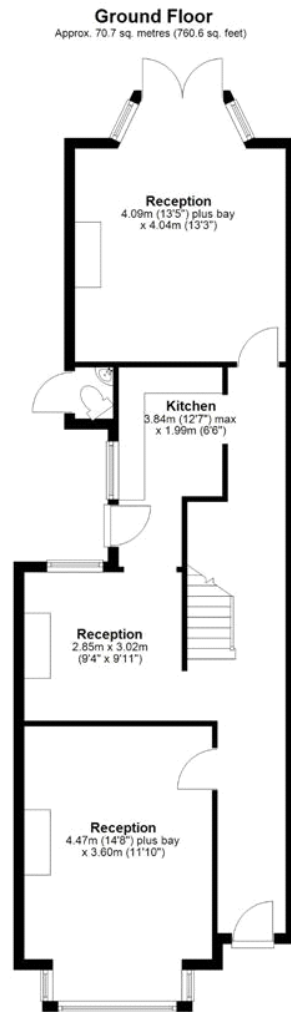




Tenure: Freehold  
Parking options: Off Street  
Garden details: Private Garden







Total area: approx. 178.2 sq. metres (1918.5 sq. feet)

Whilst every attempt has been made to ensure the accuracy of the floorplan contained here, measurements of doors, windows, rooms and any other items are approximate and no responsibility is taken for any error, omission or mis-statement. This plan is for illustrative purposes only and should be used as such by any prospective purchaser. The services, systems and appliances shown have not been tested and no guarantee as to their operability or efficiency can be given.  
Plan produced using PlanUp.

Viewing by appointment only  
Charles Stratton Estates Ltd  
192 Main Road, Gidea Park, Romford RM2 5HA  
Tel: 01708 726 817 Email: [sales@charlesstratton.co.uk](mailto:sales@charlesstratton.co.uk) Website: [www.charlesstratton.co.uk/](http://www.charlesstratton.co.uk/)

Every care has been taken with the preparation of these particulars, but complete accuracy cannot be guaranteed. If there is any point, which is of particular importance to you, please obtain professional confirmation. Alternatively, we will be pleased to check the information for you. These Particulars do not constitute a contract or part of a contract. The Fixtures, Fittings & Appliances have not been tested and therefore no guarantee can be given that they are in working order. Photographs are reproduced for general information and it cannot be inferred that any item shown is included in the sale. For any information regarding broadband and mobile phone signals go to OfCom via this link - <https://checker.ofcom.org.uk/>