



HARROW CRESCENT, ROMFORD

Detached Four-Bedroom Bungalow | Modern Open-Plan Living | Living Room | Kitchen | Bathroom W.C. | Gated Driveway | Off Street Parking | Substantial Outbuilding Split into a Shed and Work Shop | Internal Viewing Is Essential | Close to Local Bus Routes |

Guide Price £680,000 4 bedroom bungalow for sale



CHARLES STRATTON
ESTATE AGENTS



Parking options: Off Street
Garden details: Private Garden





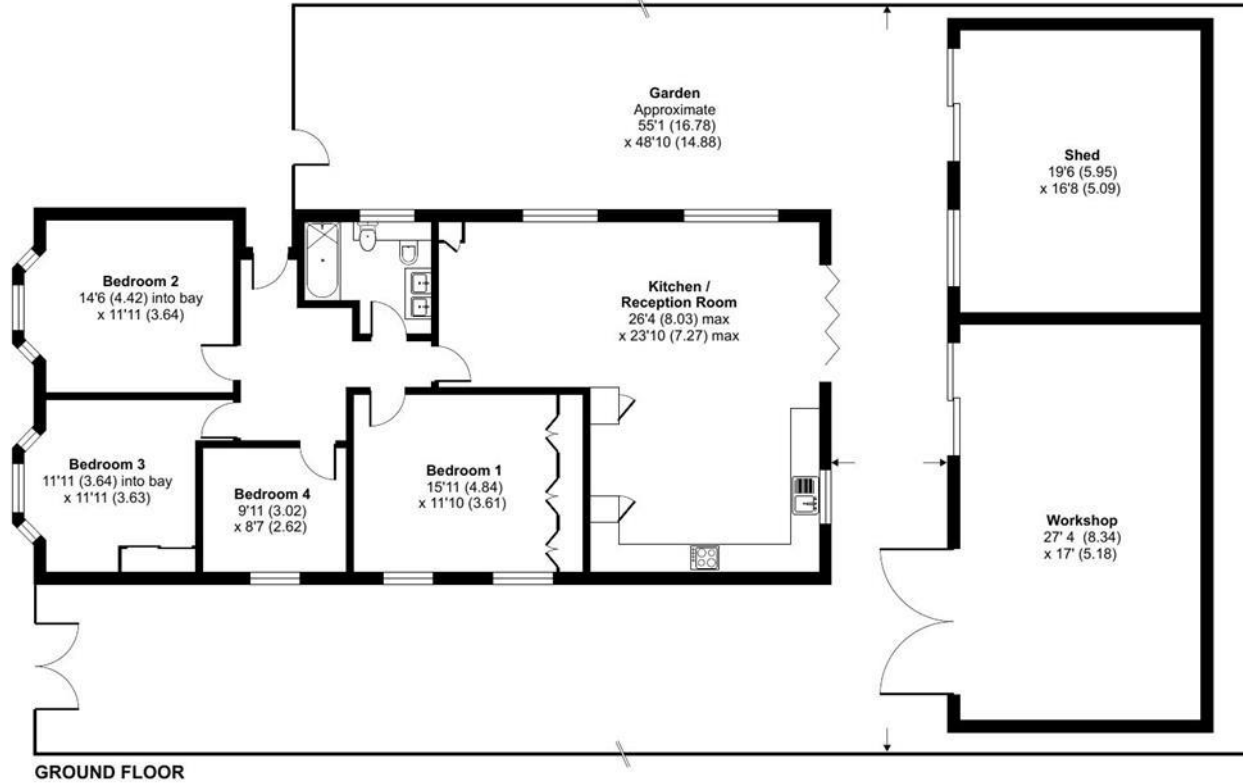
Harrow Crescent, Romford, RM3

Approximate Area = 1302 sq ft / 120.9 sq m

Outbuildings = 783 sq ft / 72.7 sq m

Total = 2085 sq ft / 193.6 sq m

For identification only - Not to scale



GROUND FLOOR

Floor plan produced in accordance with RICS Property Measurement 2nd Edition, Incorporating International Property Measurement Standards (IPMS2 Residential). © nichecom 2025. Produced for Charles Stratton Estates Ltd. REF: 1331808

Energy Efficiency Rating		Environmental Impact (CO ₂) Rating	
Current	Potential	Current	Potential
72		78	
<p>Very energy efficient - lower running costs</p> <p>(92+) A</p> <p>(81-91) B</p> <p>(69-80) C</p> <p>(55-68) D</p> <p>(39-54) E</p> <p>(21-38) F</p> <p>(1-20) G</p> <p>Not energy efficient - higher running costs</p>		<p>Very environmentally friendly - lower CO₂ emissions</p> <p>(92+) A</p> <p>(81-91) B</p> <p>(69-80) C</p> <p>(55-68) D</p> <p>(39-54) E</p> <p>(21-38) F</p> <p>(1-20) G</p> <p>Not environmentally friendly - higher CO₂ emissions</p>	
<p>England & Wales EU Directive 2002/91/EC</p>		<p>England & Wales EU Directive 2002/91/EC</p>	
<p>The energy efficiency rating is a measure of the overall efficiency of a home. The higher the rating the more energy efficient the home is and the lower the fuel bills will be.</p>		<p>The environmental impact rating is a measure of a home's impact on the environment in terms of carbon dioxide (CO₂).</p>	

Viewing by appointment only

Charles Stratton Estates Ltd

192 Main Road, Gidea Park, Romford RM2 5HA

Tel: 01708 726 817 Email: sales@charlesstratton.co.uk Website: www.charlesstratton.co.uk

Every care has been taken with the preparation of these particulars, but complete accuracy cannot be guaranteed. If there is any point, which is of particular importance to you, please obtain professional confirmation. Alternatively, we will be pleased to check the information for you. These Particulars do not constitute a contract or part of a contract. The Fixtures, Fittings & Appliances have not been tested and therefore no guarantee can be given that they are in working order. Photographs are reproduced for general information and it cannot be inferred that any item shown is included in the sale. For any information regarding broadband and mobile phone signals go to OfCom via this link - <https://checker.ofcom.org.uk/>