



KINGSTON ROAD, ROMFORD

Four/Five Bedroom Bay-Fronted Semi-Detached Home | Sought After Tree Lined Turning | Lounge | Open Plan Kitchen/Diner/Family Room with Kitchen Island | Separate Utility | Ground Floor Shower Room W.C. | First Floor Bathroom W.C. | Detached Games Room | Rear Garden Approx. 105 Feet |

£775,000 Freehold | 4 bedroom semi-detached house for sale



CHARLES STRATTON
ESTATE AGENTS



Round Bay-Fronted Semi-Detached home situated in a popular tree-lined residential turning close to both Lodge Farm and Raphaels Parks and within walking distance to Romford Town Centre with its excellent selection of Shops, Bars, Restaurants, and Elizabeth Line Railway Station.

Accommodation comprises Four Bedrooms with a Fifth Bedroom/Dressing Room to Bedroom Four, and Bathroom W.C. to the first floor. To the ground floor there is a Lounge, open plan Kitchen/Diner/ Family Room with a large Kitchen Island and a separate Utility which overlook the Rear Garden, complimented by a Ground Floor Shower Room W.C.

The property has large frontage which is block paved to provide generous off-street parking whilst to the rear the garden is mainly lawned measuring approximately 105 feet with flower and mature shrub beds to borders, and benefits from a large, detached games room measuring approximately 19'7 X 11'9.

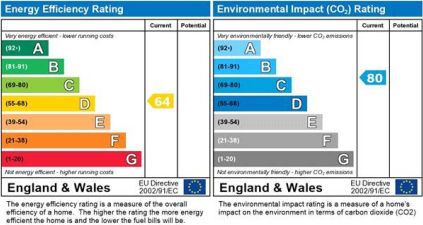
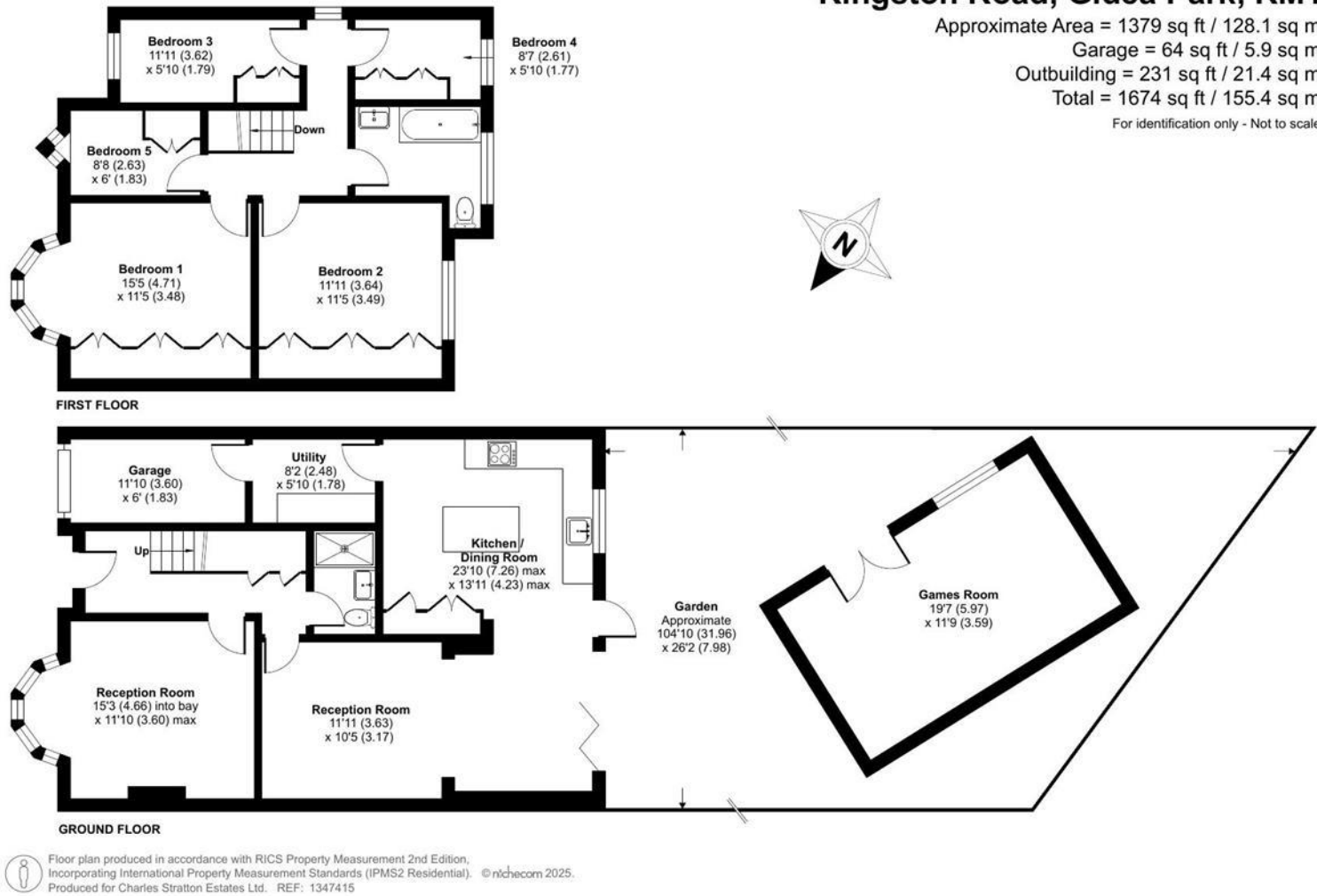
Tenure: Freehold
Parking options: Off Street
Garden details: Rear Garden





Kingston Road, Gidea Park, RM1

Approximate Area = 1379 sq ft / 128.1 sq m
Garage = 64 sq ft / 5.9 sq m
Outbuilding = 231 sq ft / 21.4 sq m
Total = 1674 sq ft / 155.4 sq m
For identification only - Not to scale



Viewing by appointment only
Charles Stratton Estates Ltd
192 Main Road, Gidea Park, Romford RM2 5HA
Tel: 01708 726 817 Email: sales@charlesstratton.co.uk Website: www.charlesstratton.co.uk/

Every care has been taken with the preparation of these particulars, but complete accuracy cannot be guaranteed. If there is any point, which is of particular importance to you, please obtain professional confirmation. Alternatively, we will be pleased to check the information for you. These Particulars do not constitute a contract or part of a contract. The Fixtures, Fittings & Appliances have not been tested and therefore no guarantee can be given that they are in working order. Photographs are reproduced for general information and it cannot be inferred that any item shown is included in the sale. For any information regarding broadband and mobile phone signals go to OfCom via this link - <https://checker.ofcom.org.uk/>