



## GIDEA LODGE, GIDEA PARK

**\*\*\* NO ONWARD CHAIN \*\*\* Two Bedroom First Floor Retirement Apartment | Close to Gidea Park's Local Shops and Amenities | Lounge | Kitchen | Shower Room W.C. | Lift Access To First Floor | Communal Lounge and Gardens | Communal Hairdressing Facilities | House Manager |**

**£245,000** Leasehold | 2 bedroom apartment for sale

**SSTC**

CHARLES STRATTON  
ESTATE AGENTS



Situated in the popular Gidea Lodge Retirement Development is the Two Bedroom First Floor Apartment.

Accommodation comprises Two Bedrooms, Lounge, Kitchen Breakfast Room, and Shower Room W.C. The property is positioned on the first floor on the south side of the building and is one of very few apartments benefiting from windows and natural light in each room. The property further benefits from only have one adjoining wall to another apartment within the development enabling a peaceful place environment.

There is a large Communal Lounge with Kitchen which open to the rear gardens which have a southerly aspect, a Hairdressing Salon for visiting stylists and a Guest Room available by prior appointment.

**Tenure:** Leasehold (100 years)  
**Ground Rent:** £360 per year  
**Service Charge:** £3,726.39 per year  
**Parking options:** Off Street  
**Garden details:** Private Garden







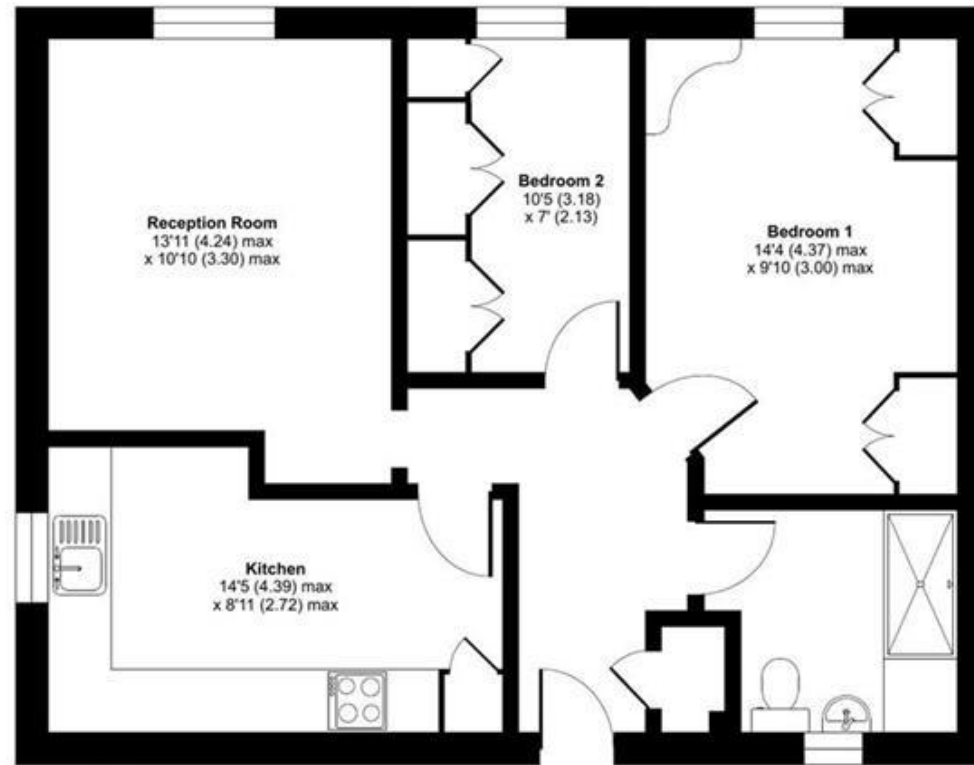




# Gidea Lodge, Main Road, Romford, RM2

Approximate Area = 625 sq ft / 58.1 sq m

For identification only - Not to scale



FIRST FLOOR



Floor plan produced in accordance with RICS Property Measurement Standards incorporating International Property Measurement Standards (IPMS2 Residential). © rîchecom 2022. Produced for Charles Stratton Estates Ltd. REF: 1058304

Energy Efficiency Rating		Environmental Impact (CO <sub>2</sub> ) Rating	
Current	Potential	Current	Potential
Very energy efficient - lower running costs		Very environmentally friendly - lower CO <sub>2</sub> emissions	
(92-100) <b>A</b>		(92-100) <b>A</b>	
(81-91) <b>B</b>		(81-91) <b>B</b>	
(69-80) <b>C</b>		(69-80) <b>C</b>	
(55-68) <b>D</b>		(55-68) <b>D</b>	
(39-54) <b>E</b>		(39-54) <b>E</b>	
(21-38) <b>F</b>		(21-38) <b>F</b>	
(1-20) <b>G</b>		(1-20) <b>G</b>	
Not energy efficient - higher running costs		Not environmentally friendly - higher CO <sub>2</sub> emissions	
<b>79</b>		<b>79</b>	

**England & Wales** EU Directive 2002/91/EC

The energy efficiency rating is a measure of the overall efficiency of a home. The higher the rating the more energy efficient the home is and the lower the fuel bills will be.

**England & Wales** EU Directive 2002/91/EC

The environmental impact rating is a measure of a home's impact on the environment in terms of carbon dioxide (CO<sub>2</sub>).

Viewing by appointment only  
Charles Stratton Estates Ltd

192 Main Road, Gidea Park, Romford RM2 5HA

Tel: 01708 726 817 Email: [sales@charlesstratton.co.uk](mailto:sales@charlesstratton.co.uk) Website: [www.charlesstratton.co.uk](http://www.charlesstratton.co.uk)

Every care has been taken with the preparation of these particulars, but complete accuracy cannot be guaranteed. If there is any point, which is of particular importance to you, please obtain professional confirmation. Alternatively, we will be pleased to check the information for you. These Particulars do not constitute a contract or part of a contract. The Fixtures, Fittings & Appliances have not been tested and therefore no guarantee can be given that they are in working order. Photographs are reproduced for general information and it cannot be inferred that any item shown is included in the sale. For any information regarding broadband and mobile phone signals go to OfCom via this link - <https://checker.ofcom.org.uk/>