



THE RIDGEWAY, GIDEA PARK

Extended Four-Bedroom Mid-Terrace Home | Lounge | Recently Re-Fitted Kitchen/Diner Open Plan to Conservatory/Breakfast Room | Ground Floor W.C. | Family Bathroom W.C. | En-Suite Bathroom | Well Maintained Rear Garden | Detached Garage |

£675,000 Freehold | Extended Four Bedroom Terraced Home EPC D

SSTC

CHARLES STRATTON
ESTATE AGENTS



Beautifully presented mid-terrace home situated in a convenient position for Gidea Park Railway Station, High Street and Local Schools.

The property has gone through an extensive re-furnishment to the ground floor to include a highly appointed Kitchen/Diner/Family Room overlooking the rear gardens, in addition to a Utility, Cloak Room W.C. and the Lounge.

Further accommodation comprises Four Bedrooms and En-Suite and Family Bathroom's to the first and second floors.

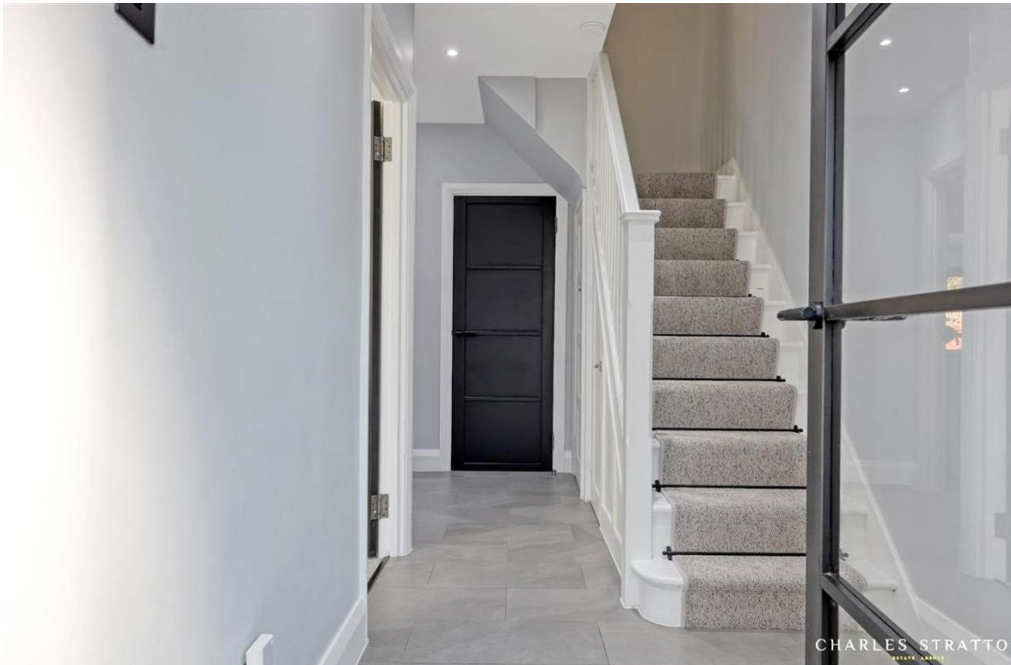
The rear gardens are well maintained with a detached Garage to the rear.

Being situated within walking distance to both Gidea Park Primary School, Gidea Park Preparatory School and Nursery and Lodge Farm and Raphael's Park, this location is always extremely popular for younger families. Gidea Park Railway Station now has the benefit of the Crossrail Elizabeth Line connections across London to Heathrow Airport, so an early viewing is highly recommended.

Tenure: Freehold

Parking options: Off Street

Garden details: Private Garden



CHARLES STRATTON
ESTATE AGENTS











CHARLES STRATTON
ESTATE AGENTS



CHARLES STRATTON
ESTATE AGENTS

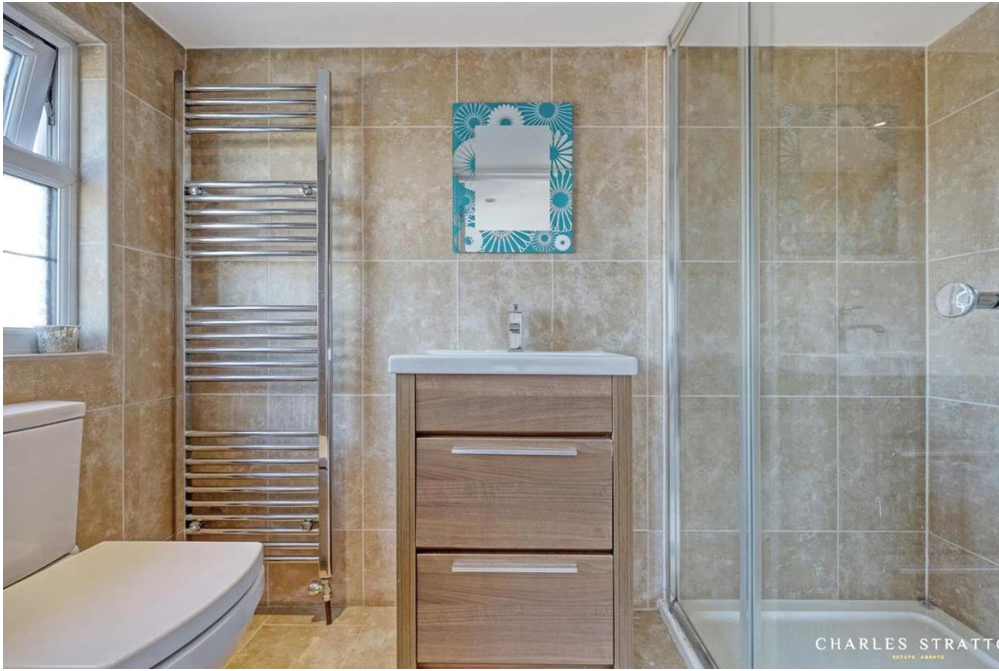


CHARLES STRATTON
ESTATE AGENTS



CHARLES STRATTON
ESTATE AGENTS

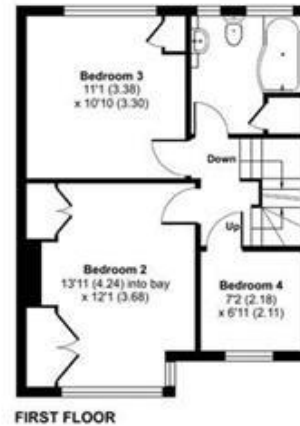






The Ridgeway, Gidea Park, Romford, RM2

Approximate Area = 1488 sq ft / 138.2 sq m
 Garage = 130 sq ft / 12 sq m
 Total = 1618 sq ft / 150.3 sq m
 For identification only - Not to scale



Floor plan produced in accordance with RICS Property Measurement Standards incorporating International Property Measurement Standards (IPMS2 Residential). © rchecom 2025. Produced for Charles Stratton Estates Ltd. REF: 980509

Energy Efficiency Rating		Environmental Impact (CO ₂) Rating	
Current	Potential	Current	Potential
Very energy efficient - lower running costs		Very environmentally friendly - lower CO ₂ emissions	
(92-100) A		(92-100) A	
(81-91) B		(81-91) B	
(69-80) C		(69-80) C	
(55-68) D		(55-68) D	
(39-54) E		(39-54) E	
(21-38) F		(21-38) F	
(1-20) G		(1-20) G	
Not energy efficient - higher running costs		Not environmentally friendly - higher CO ₂ emissions	
England & Wales	EU Directive 2002/91/EC	England & Wales	EU Directive 2002/91/EC

Energy Efficiency Rating: **68**
 Environmental Impact (CO₂) Rating: **81**

The energy efficiency rating is a measure of the overall efficiency of a home. The higher the rating the more energy efficient the home is and the lower the fuel bills will be.
 The environmental impact rating is a measure of a home's impact on the environment in terms of carbon dioxide (CO₂).

Viewing by appointment only
 Charles Stratton Estates Ltd

192 Main Road, Gidea Park, Romford RM2 5HA

Tel: 01708 726 817 Email: sales@charlesstratton.co.uk Website: www.charlesstratton.co.uk

Every care has been taken with the preparation of these particulars, but complete accuracy cannot be guaranteed. If there is any point, which is of particular importance to you, please obtain professional confirmation. Alternatively, we will be pleased to check the information for you. These Particulars do not constitute a contract or part of a contract. The Fixtures, Fittings & Appliances have not been tested and therefore no guarantee can be given that they are in working order. Photographs are reproduced for general information and it cannot be inferred that any item shown is included in the sale. For any information regarding broadband and mobile phone signals go to OfCom via this link - <https://checker.ofcom.org.uk/>