



HARROW CRESCENT, ROMFORD

Heaton Grange Location | Three Bedroom Semi-Detached Bungalow | Lounge | Dining Room Open Plan to Kitchen | Three Piece Shower Room W.C. | Additional Separate W.C. | Generous Off-Street Parking | Rear Garden | Close to Local Bus Routes |



CHARLES STRATTON
ESTATE AGENTS

Freehold | 3 bedroom bungalow for sale



Situated in a popular residential turning within Heaton Grange is this modern and very well-presented Semi-Detached Bungalow.

Accommodation comprises Three Bedrooms, Lounge, Dining Room which is open plan to a highly appointed Kitchen, Shower Room W.C., and an additional separate W.C.

The front of this double fronted bungalow the garden has been block paved to provide generous off-street parking whilst the rear gardens are mainly lawned with a large patio area with outside lighting and mature shrub beds laid to fenced borders.

Tenure: Freehold

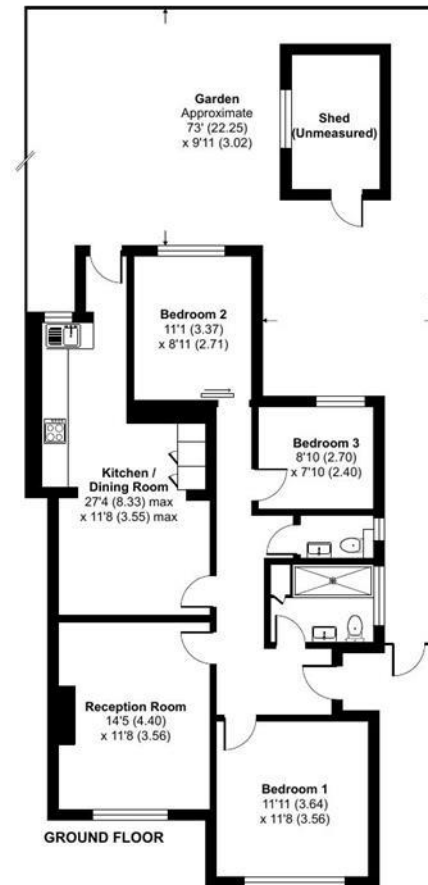




Harrow Crescent, Romford, RM3

Approximate Area = 964 sq ft / 89.6 sq m (excludes shed)

For identification only - Not to scale



Floor plan produced in accordance with RICS Property Measurement 2nd Edition, Incorporating International Property Measurement Standards (IPMS2 Residential). © nichecom 2025. Produced for Charles Stratton Estates Ltd. REF: 1340211

Energy Efficiency Rating		Environmental Impact (CO ₂) Rating	
Current	Potential	Current	Potential
<p>Very energy efficient - lower running costs</p> <p>(92-100) A</p> <p>(81-91) B</p> <p>(69-80) C</p> <p>(55-68) D</p> <p>(39-54) E</p> <p>(21-38) F</p> <p>(1-20) G</p>		<p>Very environmentally friendly - lower CO₂ emissions</p> <p>(92-100) A</p> <p>(81-91) B</p> <p>(69-80) C</p> <p>(55-68) D</p> <p>(39-54) E</p> <p>(21-38) F</p> <p>(1-20) G</p>	
<p>Not energy efficient - higher running costs</p> <p>EU Directive 2002/91/EC</p>		<p>Not environmentally friendly - higher CO₂ emissions</p> <p>EU Directive 2002/91/EC</p>	
<p>England & Wales</p>		<p>England & Wales</p>	
<p>The energy efficiency rating is a measure of the overall efficiency of a home. The higher the rating the more energy efficient the home is and the lower the fuel bills will be.</p>		<p>The environmental impact rating is a measure of a home's impact on the environment in terms of carbon dioxide (CO₂).</p>	

Viewing by appointment only

Charles Stratton Estates Ltd

192 Main Road, Gidea Park, Romford RM2 5HA

Tel: 01708 726 817 Email: sales@charlesstratton.co.uk Website: www.charlesstratton.co.uk/

Every care has been taken with the preparation of these particulars, but complete accuracy cannot be guaranteed. If there is any point, which is of particular importance to you, please obtain professional confirmation. Alternatively, we will be pleased to check the information for you. These Particulars do not constitute a contract or part of a contract. The Fixtures, Fittings & Appliances have not been tested and therefore no guarantee can be given that they are in working order. Photographs are reproduced for general information and it cannot be inferred that any item shown is included in the sale. For any information regarding broadband and mobile phone signals go to OfCom via this link - <https://checker.ofcom.org.uk/>