



GIDEA LODGE, MAIN ROAD,

One Bedroom House Manager Assisted Apartment | Recently Re-Furbished |
Lounge Opening To Patio Area | End Of Chain | Communal Lounge And Gardens
| Guest Suite | Close To Shops And Amenities |

£270,000 Leasehold | 1 bedroom apartment for sale



CHARLES STRATTON
ESTATE AGENTS



Tenure: Leasehold (99 years)
Ground Rent: £230 per year
Service Charge: £2,714 per year
Parking options: Off Street, Residents
Garden details: Communal Garden, Private Garden

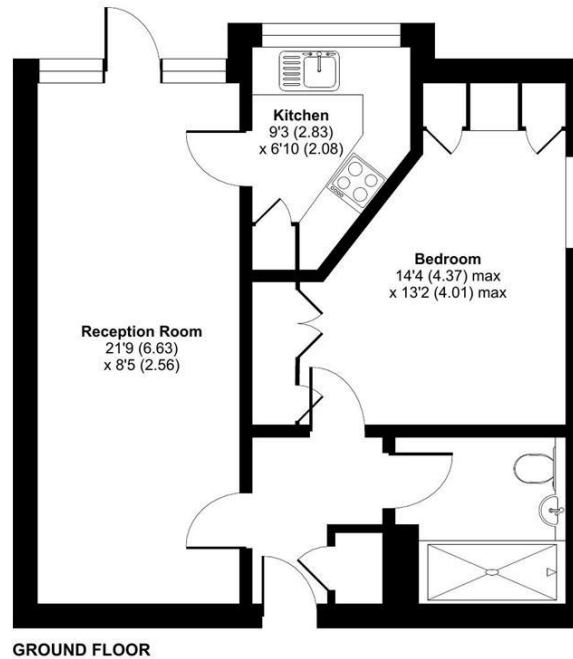





Main Road, Gidea Park, RM2

Approximate Area = 493 sq ft / 45.8 sq m

For identification only - Not to scale



 Floor plan produced in accordance with RICS Property Measurement 2nd Edition, Incorporating International Property Measurement Standards (IPMS2 Residential). © nñcheom 2025. Produced for Charles Stratton Estates Ltd. REF: 1249665

Viewing by appointment only

Charles Stratton Estates Ltd

192 Main Road, Gidea Park, Romford RM2 5HA

Tel: 01708 726 817 Email: sales@charlesstratton.co.uk Website: www.charlesstratton.co.uk/

Every care has been taken with the preparation of these particulars, but complete accuracy cannot be guaranteed. If there is any point, which is of particular importance to you, please obtain professional confirmation. Alternatively, we will be pleased to check the information for you. These Particulars do not constitute a contract or part of a contract. The Fixtures, Fittings & Appliances have not been tested and therefore no guarantee can be given that they are in working order. Photographs are reproduced for general information and it cannot be inferred that any item shown is included in the sale. For any information regarding broadband and mobile phone signals go to OfCom via this link - <https://checker.ofcom.org.uk/>