



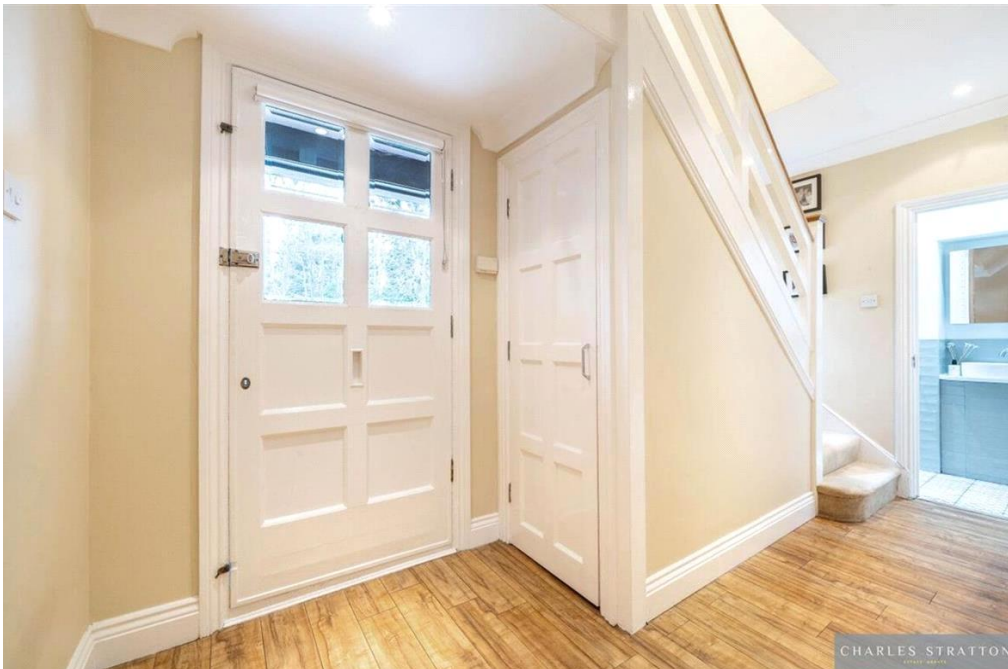
HEATH DRIVE, GIDEA PARK

Gidea Park Exhibition Estate | Four Bedroom Detached Home | Two Bathrooms | Sitting Room | Open Plan Kitchen/Diner and Orangery | Snug/T.V. Room | Utility | Home Office | Store | Close to Gidea Park High Street | Close to Gidea Park's Crossrail Elizabeth Line Railway Station |



SSTC

CHARLES STRATTON
ESTATE AGENTS



Beautifully presented and impeccably maintained Detached Residence situated on the sought after Gidea Park Exhibition Estate.

The property is set amongst established grounds and is approached by a long-shingled driveway providing generous off-street parking and lawn area with screened borders.

The front door opens to the Entrance Hall with doors opening to a Ground Floor W.C. Sitting Room, open plan Kitchen/Dining Room and Orangery which overlook the meticulously well-kept gardens, Snug, Utility, and Home Office. There is a store which can be accessed from an external door at the side of the property which completes the ground floor accommodation.

To the first floor there are Four Bedrooms, En-Suite to the Master Bedroom and Four Piece Family Bathroom.

Rear Gardens commence with a paved sun-terrace and are mainly lawned with mature shrub beds to borders, ornate garden pond, and a covered pergola to the rear

Tenure: Freehold

Parking options: Off Street

Garden details: Private Garden





Heath Drive, Gidea Park, Gidea Park, RM2

Approximate Area = 2160 sq ft / 200.6 sq m

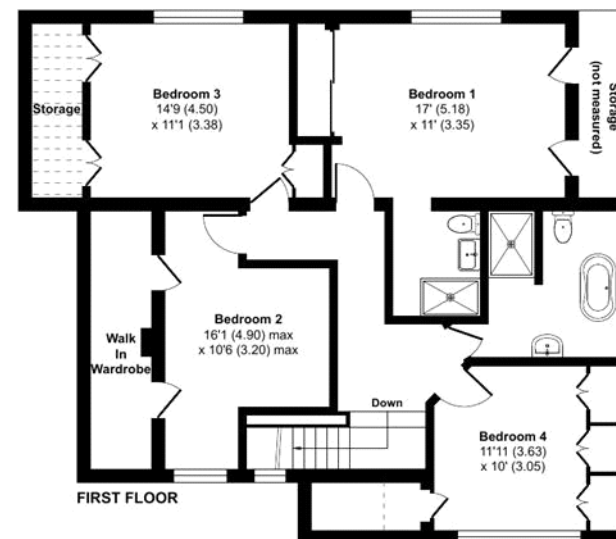
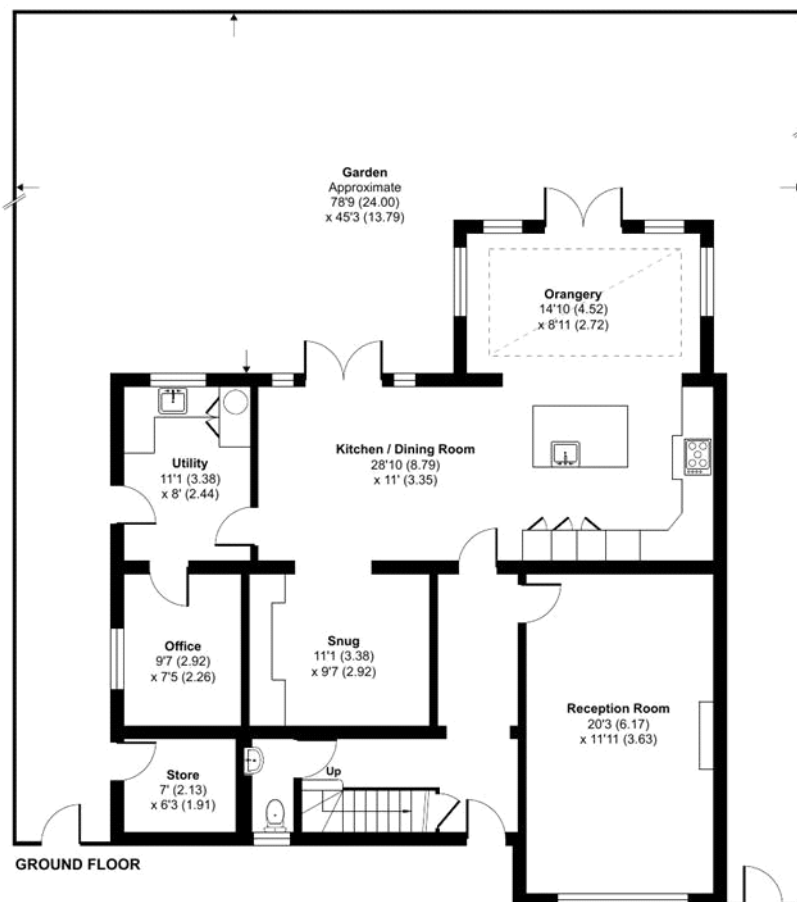
Limited Use Area(s) = 59 sq ft / 5.4 sq m

Outbuilding = 42 sq ft / 3.9 sq m

Total = 2261 sq ft / 209.9 sq m

For identification only - Not to scale

Denotes restricted
head height



Floor plan produced in accordance with RICS Property Measurement 2nd Edition, Incorporating International Property Measurement Standards (IPMS2 Residential). © nichecom 2025. Produced for Charles Stratton Estates Ltd. REF: 1226772

Viewing by appointment only

Charles Stratton Estates Ltd

192 Main Road, Gidea Park, Romford RM2 5HA

Tel: 01708 726 817 Email: sales@charlesstratton.co.uk Website: www.charlesstratton.co.uk/

Every care has been taken with the preparation of these particulars, but complete accuracy cannot be guaranteed. If there is any point, which is of particular importance to you, please obtain professional confirmation. Alternatively, we will be pleased to check the information for you. These Particulars do not constitute a contract or part of a contract. The Fixtures, Fittings & Appliances have not been tested and therefore no guarantee can be given that they are in working order. Photographs are reproduced for general information and it cannot be inferred that any item shown is included in the sale. For any information regarding broadband and mobile phone signals go to OfCom via this link - <https://checker.ofcom.org.uk/>