



FARNES DRIVE, GIDEA PARK

Beautifully Presented Three-Bedroom Semi-Detached Home | Open Plan Lounge/Diner | Kitchen | Bathroom | Separate W.C. | Close To Shops And Amenities | Walking Distance to Gidea Park Railway Station | Off-Street Parking | Internal Viewing Highly Recommended |

Guide Price £500,000 Freehold | 3 bedroom semi-detached house for sale

SSTC

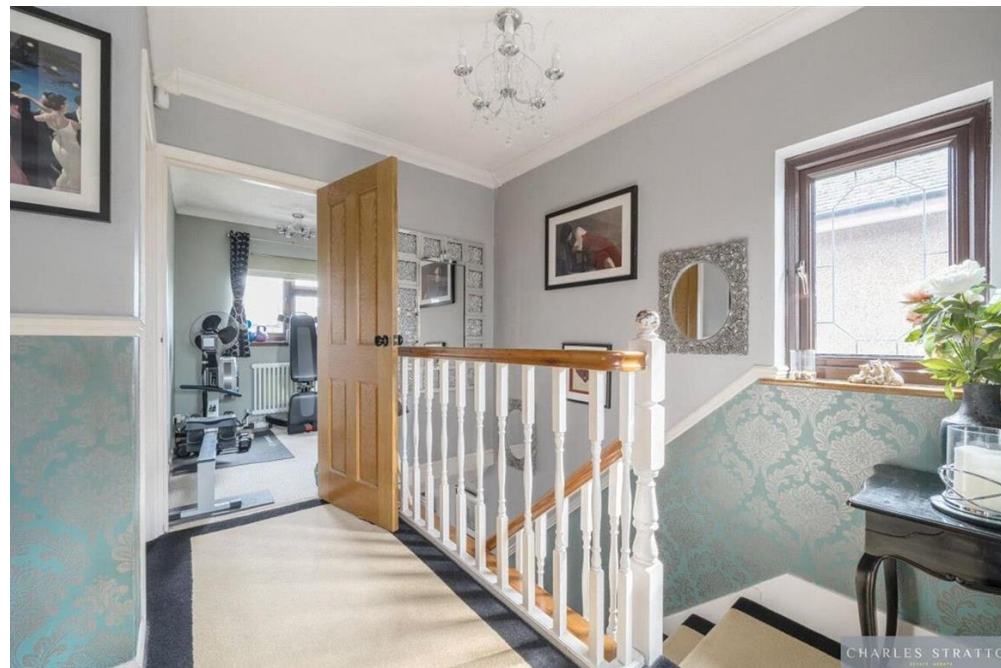
CHARLES STRATTON
ESTATE AGENTS



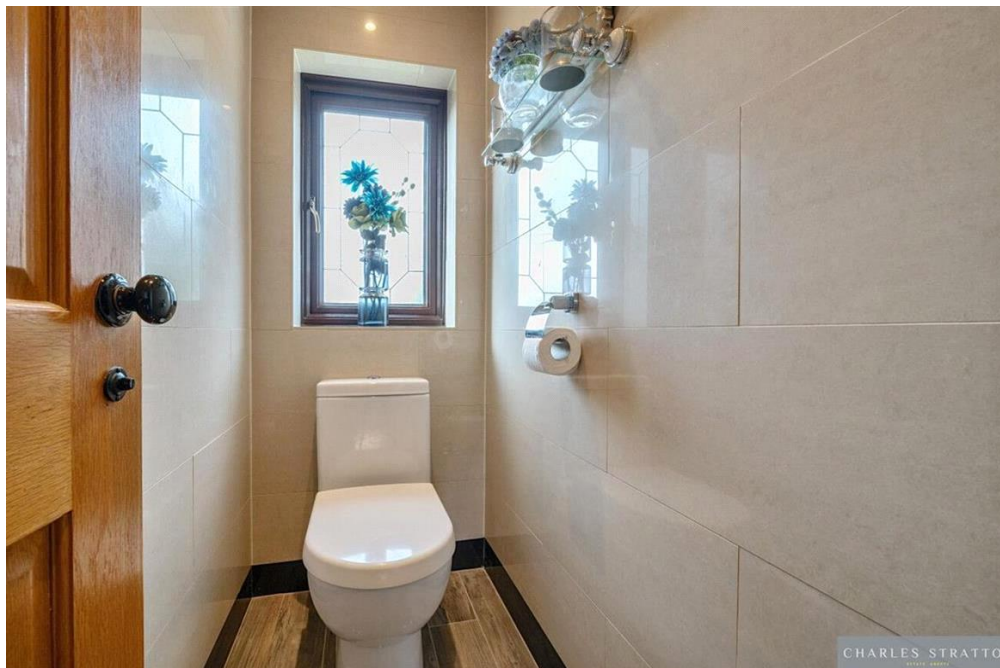
Tenure: Freehold
Parking options: Off Street
Garden details: Private Garden











Farnes Drive, Romford, Gidea Park

Approximate Area = 962 sq ft / 89.3 sq m
For identification only - Not to scale



Floor plan produced in accordance with RICS Property Measurement Standards incorporating International Property Measurement Standards (IPMS2 Residential). © rldchcom 2024. Produced for Charles Stratton Estates Ltd. REF: 1193164

Energy Efficiency Rating		Environmental Impact (CO ₂) Rating	
Current	Potential	Current	Potential
England & Wales		England & Wales	

The energy efficiency rating is a measure of the overall efficiency of a home. The higher the rating the more energy efficient the home is and the lower the fuel bills will be.

The environmental impact rating is a measure of a home's impact on the environment in terms of carbon dioxide (CO₂).

Viewing by appointment only
Charles Stratton Estates Ltd

192 Main Road, Gidea Park, Romford RM2 5HA

Tel: 01708 726 817 Email: sales@charlesstratton.co.uk Website: www.charlesstratton.co.uk/

Every care has been taken with the preparation of these particulars, but complete accuracy cannot be guaranteed. If there is any point, which is of particular importance to you, please obtain professional confirmation. Alternatively, we will be pleased to check the information for you. These Particulars do not constitute a contract or part of a contract. The Fixtures, Fittings & Appliances have not been tested and therefore no guarantee can be given that they are in working order. Photographs are reproduced for general information and it cannot be inferred that any item shown is included in the sale. For any information regarding broadband and mobile phone signals go to OfCom via this link - <https://checker.ofcom.org.uk/>