



MEADWAY, ROMFORD

Detached Home Situated On The Gidea Park Exhibition Estate | Featured In The Hundred Best Houses Book | Three Bedrooms | First Floor Bathroom | Ground Floor Cloakroom | Sitting Room | Kitchen Family Room | Long Driveway Providing Off Street Parking | Detached Garage | Secluded and Mature Gardens |

£1,000,000 Freehold | 3 bedroom detached house for sale



SSTC

CHARLES STRATTON
ESTATE AGENTS



Superb example of a 1911 Exhibition Home situated on the Gidea Park Exhibition Estate displaying a wealth of charm and character whilst providing a large open plan living area overlooking established gardens to the rear.

The property is approached by a long-shingled driveway through the front gardens which provides generous off-street parking and leads to both the Entrance Porch and a Detached Garage.

The front door opens to a Reception Hall with stairs ascending to the first-floor accommodation and doors opening to a Bay-Fronted Sitting Room, a small lobby with a Utility Cupboard and door opening to a Cloakroom W.C., and a large Kitchen/Family Room furnished with modern units and a large central island with contrasting drawers beneath. This room is a very bright open space with windows to both sides, one being a square bay with window seat beneath, a rooflight and Bi-Folding Doors which open the room to the patio and rear gardens.

To the first floor there are three Bedrooms and a Four Piece Family Bathroom W.C.

Gidea Park is primarily a residential area with a small high street providing a fine selection of shops, restaurants pubs and bars. The area has always been popular with commuters and now even more so with the introduction of the Crossrail Elizabeth Line.

Tenure: Freehold

Parking options: Off Street

Garden details: Private Garden







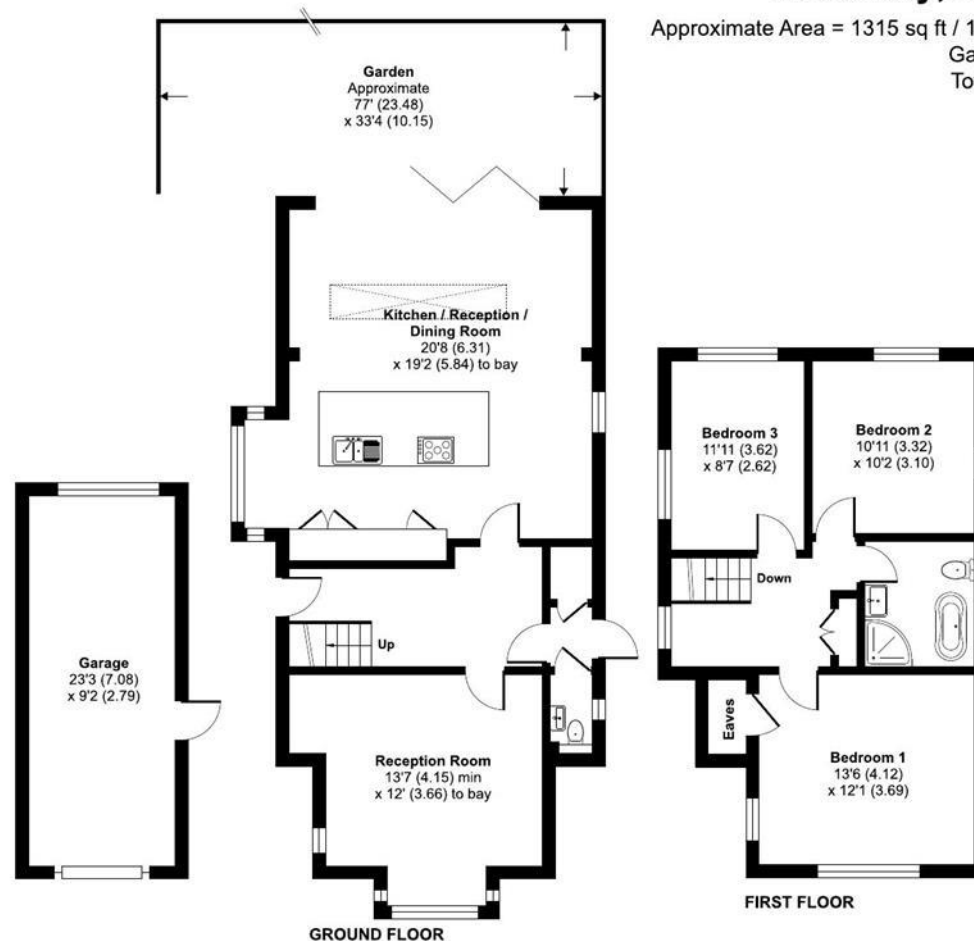
Meadway, Gidea Park, RM2

Approximate Area = 1315 sq ft / 122.1 sq m (excludes eaves)

Garage = 213 sq ft / 19.7 sq m

Total = 1528 sq ft / 141.8 sq m

For identification only - Not to scale



Floor plan produced in accordance with RICS Property Measurement Standards incorporating International Property Measurement Standards (IPMS2 Residential). © nrichcom 2024. Produced for Charles Stratton Estates Ltd. REF: 1184832

Energy Efficiency Rating		Environmental Impact (CO ₂) Rating	
Current	Potential	Current	Potential
Very energy efficient - lower running costs		Very environmentally friendly - lower CO ₂ emissions	
(92-100) A		(92-100) A	
(81-91) B		(81-91) B	
(69-80) C		(69-80) C	
(55-68) D		(55-68) D	
(39-54) E		(39-54) E	
(21-38) F		(21-38) F	
(1-20) G		(1-20) G	
Not energy efficient - higher running costs		Not environmentally friendly - higher CO ₂ emissions	
England & Wales EU Directive 2002/91/EC		England & Wales EU Directive 2002/91/EC	
The energy efficiency rating is a measure of the overall efficiency of a home. The higher the rating the more energy efficient the home is and the lower the fuel bills will be.		The environmental impact rating is a measure of a home's impact on the environment in terms of carbon dioxide (CO ₂) emissions.	

Viewing by appointment only

Charles Stratton Estates Ltd

192 Main Road, Gidea Park, Romford RM2 5HA

Tel: 01708 726 817 Email: sales@charlesstratton.co.uk Website: www.charlesstratton.co.uk/

Every care has been taken with the preparation of these particulars, but complete accuracy cannot be guaranteed. If there is any point, which is of particular importance to you, please obtain professional confirmation. Alternatively, we will be pleased to check the information for you. These Particulars do not constitute a contract or part of a contract. The Fixtures, Fittings & Appliances have not been tested and therefore no guarantee can be given that they are in working order. Photographs are reproduced for general information and it cannot be inferred that any item shown is included in the sale. For any information regarding broadband and mobile phone signals go to OfCom via this link - <https://checker.ofcom.org.uk/>