



REPTON GARDENS, GIDEA PARK

Two Bedroom Semi-Detached Bungalow Undergoing Refurbishment | New Roof
| Bathroom In The Process Of Being Fitted | Opportunity To Purchase Before
New Kitchen Is Fitted For Anyone Looking To Re-Configure The Existing Layout
| End Of Chain |

Offers Over £625,000 Freehold | 2 bedroom bungalow for sale

SSTC

CHARLES STRATTON
ESTATE AGENTS

Two-Bedroom Semi-Detached Bungalow situated in a convenient position close to local shops and amenities.

The property is undergoing refurbishment which has included a new roof, a bathroom which is in the process of being fitted and the option to purchase the property before a new kitchen is supplied for anyone looking to extend the property further.

Tenure: Freehold

Parking options: Off Street

Garden details: Private Garden

Repton Gardens, Romford, RM2

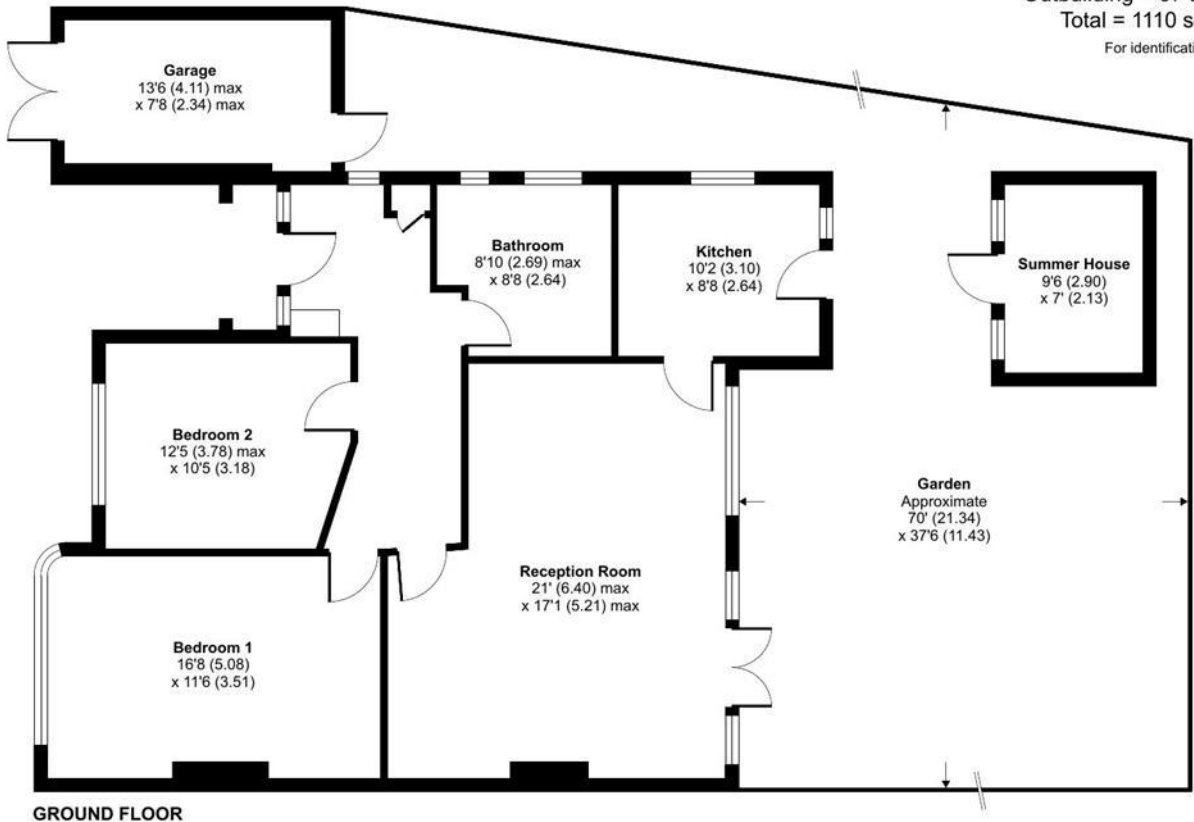
Approximate Area = 940 sq ft / 87.3 sq m

Garage = 103 sq ft / 9.5 sq m

Outbuilding = 67 sq ft / 6.2 sq m

Total = 1110 sq ft / 103 sq m

For identification only - Not to scale



Floor plan produced in accordance with RICS Property Measurement Standards incorporating International Property Measurement Standards (IPMS2 Residential). © nrlchem 2023. Produced for Charles Stratton Estates Ltd. REF: 1037377

Energy Efficiency Rating		Environmental Impact (CO ₂) Rating	
Current	Potential	Current	Potential
Very energy efficient - lower running costs		Very environmentally friendly - lower CO ₂ emissions	
(92-100) A		(92-100) A	
(81-91) B		(81-91) B	
(69-80) C		(69-80) C	
(55-68) D		(55-68) D	
(39-54) E		(39-54) E	
(21-38) F		(21-38) F	
(1-20) G		(1-20) G	
Not energy efficient - higher running costs		Not environmentally friendly - higher CO ₂ emissions	
England & Wales	EU Directive 2002/91/EC	England & Wales	EU Directive 2002/91/EC

The energy efficiency rating is a measure of the overall efficiency of a home. The higher the rating the more energy efficient the home is and the lower the fuel bills will be.

The environmental impact rating is a measure of a home's impact on the environment in terms of carbon dioxide (CO₂).

Viewing by appointment only
Charles Stratton Estates Ltd

192 Main Road, Gidea Park, Romford RM2 5HA

Tel: 01708 726 817 Email: sales@charlesstratton.co.uk Website: www.charlesstratton.co.uk/

Every care has been taken with the preparation of these particulars, but complete accuracy cannot be guaranteed. If there is any point, which is of particular importance to you, please obtain professional confirmation. Alternatively, we will be pleased to check the information for you. These Particulars do not constitute a contract or part of a contract. The Fixtures, Fittings & Appliances have not been tested and therefore no guarantee can be given that they are in working order. Photographs are reproduced for general information and it cannot be inferred that any item shown is included in the sale. For any information regarding broadband and mobile phone signals go to OfCom via this link - <https://checker.ofcom.org.uk/>