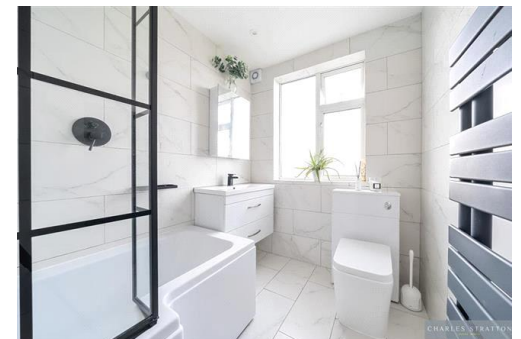




DORSET AVENUE, ROMFORD

Extended Three Bedroom Terraced Home | High Specification Throughout | Lounge | Open Plan Kitchen/Diner/Family Room | Bathroom W.C. | Large Sun-Terrace | Approximately 100' Rear Garden | Off Street Parking | Walking Distance to Romford Town Centre And Elizabeth Line Railway Station |

£525,000 3 bedroom terraced house for sale



SSTC

CHARLES STRATTON
ESTATE AGENTS



Situated in a popular residential turning close to local schools and Romford Town Centre with its Crossrail Elizabeth Line Railway Station is this well presented Three-Bedroom mid terrace home.

The property is approached by a block paved driveway which offers off street parking to the front and leads to the front door which opens to the Entrance Hall with further doors opening to the round bay-fronted Lounge and a spacious Kitchen/Diner/Family Room. To the first floor there are Three Bedrooms and Bathroom W.C. To the rear there is a large Sun-Terrace laid to mainly lawned gardens measuring approximately 100 feet.

Rarely to properties of standard become available so we urge an internal viewing at your earliest opportunity.





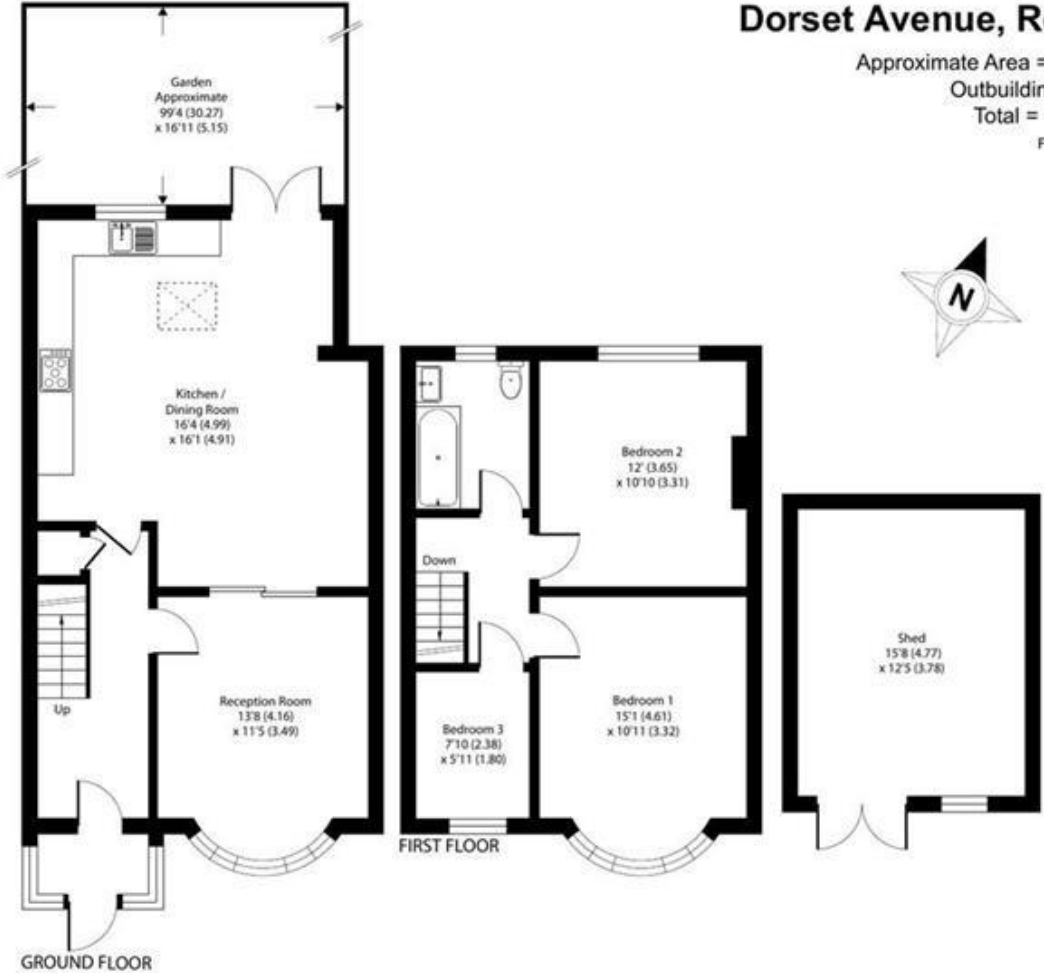






Dorset Avenue, Romford, RM1

Approximate Area = 1071 sq ft / 99.4 sq m
Outbuilding = 194 sq ft / 18 sq m
Total = 1265 sq ft / 117.5 sq m
For identification only - Not to scale



Floor plan produced in accordance with RICS Property Measurement Standards incorporating International Property Measurement Standards (IPMS2 Residential). © rēchecom 2024. Produced for Charles Stratton Estates Ltd REF: 1141067

Energy Efficiency Rating		Environmental Impact (CO ₂) Rating	
Current	Potential	Current	Potential
Very energy efficient - lower running costs 92-100 A		Very environmentally friendly - lower CO ₂ emissions 92-100 A	
81-91 B		81-91 B	90
69-80 C		69-80 C	
55-68 D		55-68 D	
39-54 E		39-54 E	
21-38 F		21-38 F	
1-10 G		1-20 G	
Not energy efficient - higher running costs		Not environmentally friendly - higher CO ₂ emissions	
England & Wales	EU Directive 2002/91/EC	England & Wales	EU Directive 2002/91/EC
The energy efficiency rating is a measure of the overall efficiency of a home. The higher the rating the more energy efficient the home is and the lower the fuel bills will be.		The environmental impact rating is a measure of a home's impact on the environment in terms of carbon dioxide (CO ₂)	

Viewing by appointment only
Charles Stratton Estates Ltd

192 Main Road, Gidea Park, Romford RM2 5HA

Tel: 01708 726 817 Email: sales@charlesstratton.co.uk Website: www.charlesstratton.co.uk/

Every care has been taken with the preparation of these particulars, but complete accuracy cannot be guaranteed. If there is any point, which is of particular importance to you, please obtain professional confirmation. Alternatively, we will be pleased to check the information for you. These Particulars do not constitute a contract or part of a contract. The Fixtures, Fittings & Appliances have not been tested and therefore no guarantee can be given that they are in working order. Photographs are reproduced for general information and it cannot be inferred that any item shown is included in the sale. For any information regarding broadband and mobile phone signals go to OfCom via this link - <https://checker.ofcom.org.uk/>