



THE RIDGEWAY, GIDEA PARK, ROMFORD

Extended Three Bedroom Terraced Home | 33'3" Lounge/Diner | Kitchen |
Ground Floor W.C. | Three Bedrooms | First Floor Bathroom | Rear Garden |
Large Detached Garage Measuring 23'6" X 18' | No Onward Chain |

£550,000 Freehold | 3 bedroom terraced house for sale



SSTC

CHARLES STRATTON
ESTATE AGENTS



Situated in a convenient position for Gidea Park Railway Station, Local Schools, Shops and Amenities is this extended three-bedroom mid-terraced home.

Accommodation comprises three bedrooms and family bathroom W.C. to the first floor, whilst to the ground floor there is a 33'3" Lounge/Diner, Kitchen, and Cloakroom W.C.

To the front of the property has been paved to provide off-street parking in addition to the substantial garage measuring 23'6" X 18' situated at the rear of the garden which enjoys a southerly aspect.

Tenure: Freehold

Parking options: Off Street

Garden details: Private Garden

Lounge/Diner w: 4.11m x l: 10.13m

Kitchen w: 2.01m x l: 4.52m

Cloakroom W.C.

Bedroom 1 w: 3.05m x l: 4.42m

Bedroom 2 w: 3.3m x l: 3.35m

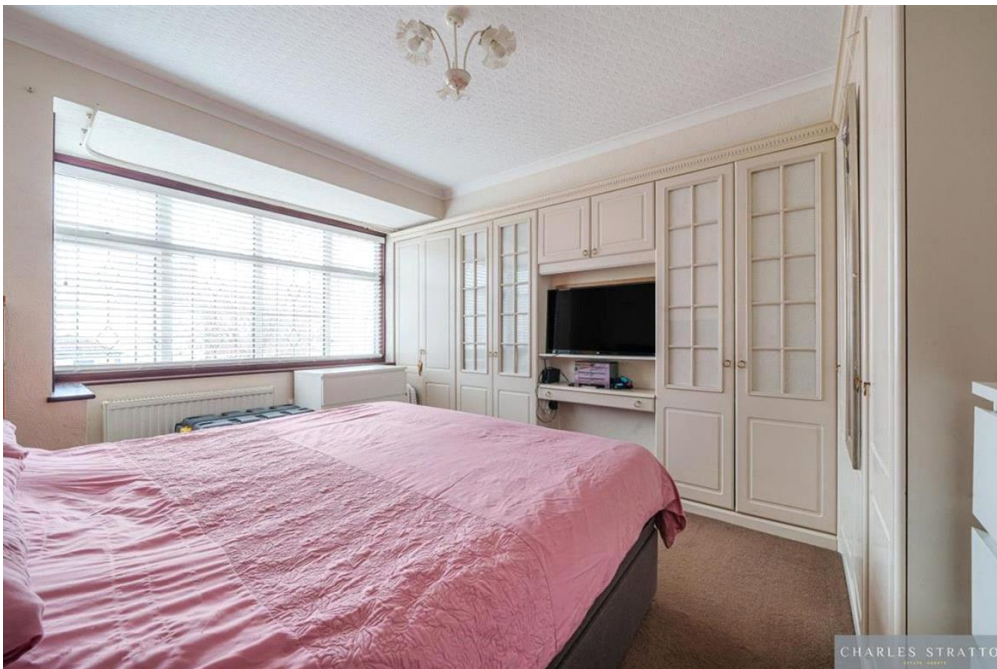
Bedroom 3 w: 2.13m x l: 2.59m

Bathroom W.C.

Garage w: 5.49m x l: 7.01m



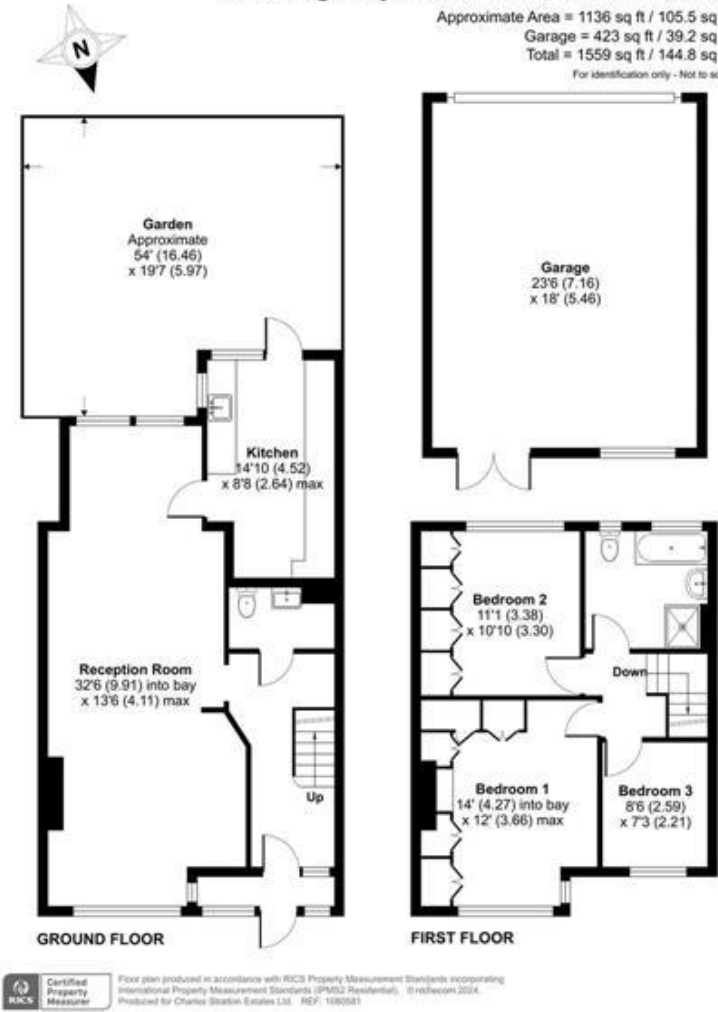






The Ridgeway, Gidea Park, Romford, RM2

Approximate Area = 1136 sq ft / 105.5 sq m
Garage = 423 sq ft / 39.2 sq m
Total = 1559 sq ft / 144.8 sq m
For identification only - Not to scale



Energy Efficiency Rating		Environmental Impact (CO ₂) Rating	
Current	Potential	Current	Potential
Very energy efficient - lower running costs		Very environmentally friendly - lower CO ₂ emissions	
92-100	A	92-100	A
81-91	B	81-91	B
69-80	C	69-80	C
55-68	D	55-68	D
39-54	E	39-54	E
21-38	F	21-38	F
1-20	G	1-20	G
Not energy efficient - higher running costs		Not environmentally friendly - higher CO ₂ emissions	
England & Wales		England & Wales	
EU Directive 2002/91/EC		EU Directive 2002/91/EC	
The energy efficiency rating is a measure of the overall efficiency of a home. The higher the rating the more energy efficient the home is and the lower the fuel bills will be.		The environmental impact rating is a measure of a home's impact on the environment in terms of carbon dioxide (CO ₂).	

Viewing by appointment only
Charles Stratton Estates Ltd

192 Main Road, Gidea Park, Romford RM2 5HA

Tel: 01708 726 817 Email: sales@charlesstratton.co.uk Website: www.charlesstratton.co.uk/

Every care has been taken with the preparation of these particulars, but complete accuracy cannot be guaranteed. If there is any point, which is of particular importance to you, please obtain professional confirmation. Alternatively, we will be pleased to check the information for you. These Particulars do not constitute a contract or part of a contract. The Fixtures, Fittings & Appliances have not been tested and therefore no guarantee can be given that they are in working order. Photographs are reproduced for general information and it cannot be inferred that any item shown is included in the sale. For any information regarding broadband and mobile phone signals go to OfCom via this link - <https://checker.ofcom.org.uk/>