



## HIGHLANDS APARTMENTS, GIDEA PARK

**Bright and Spacious Two Bedroom Top Floor Retirement Apartment Positioned In the Southerly Side of the Development Benefiting From a Wealth of Natural Light | Excellent Communal Areas and Gardens | Guest Suite Available By Prior Appointment | No Onward Chain | Onsite House Manager |**

**SSTC**

**CHARLES STRATTON**  
ESTATE AGENTS

Leasehold | 2 Bedroom Retirement Apartment EPC B



Highlands Apartments is a development of exclusive retirement apartments for the over 60's close to Gidea Park High Street and a short and direct bus ride from Romford Town Centre.

The block is approached via electric security gates which open to a large parking area and leads to the entrance door with Security Entryphone System. From here you will find a galleried reception hall with a returning staircase with light oak spindle rail balustrade leading to the first and second floors which can also be accessed by lift. There is a large communal Lounge with Kitchen and doors which open to the sun terrace overlooking the landscaped rear gardens. The onsite house managers office is also positioned on the ground floor.

The apartment itself is on the top floor and enjoys a southerly aspect enjoying naturally bright and spacious living accommodation. There are Two Bedrooms, Four Piece Bathroom W.C. and a Lounge which opens to the Kitchen. There are good storage cupboards in the Entrance Hall and Fitted Wardrobes to both Bedrooms.

Local shopping facilities are just a short walk away to the High Street which includes a Co-op, local butcher and a selection of small pubs and restaurants. There is a direct bus link to Romford Town Centre or to Gallows Corner where there is a large Tesco Supermarket. Gidea Park Railway Station is approximately half a mile away.

**Council Tax Band: D**

**Tenure: Leasehold (112 years)**

**Ground Rent: £500 per year**

**Service Charge: £4,297.05 per year**

**Parking options: Off Street**

**Garden details: Private Garden**

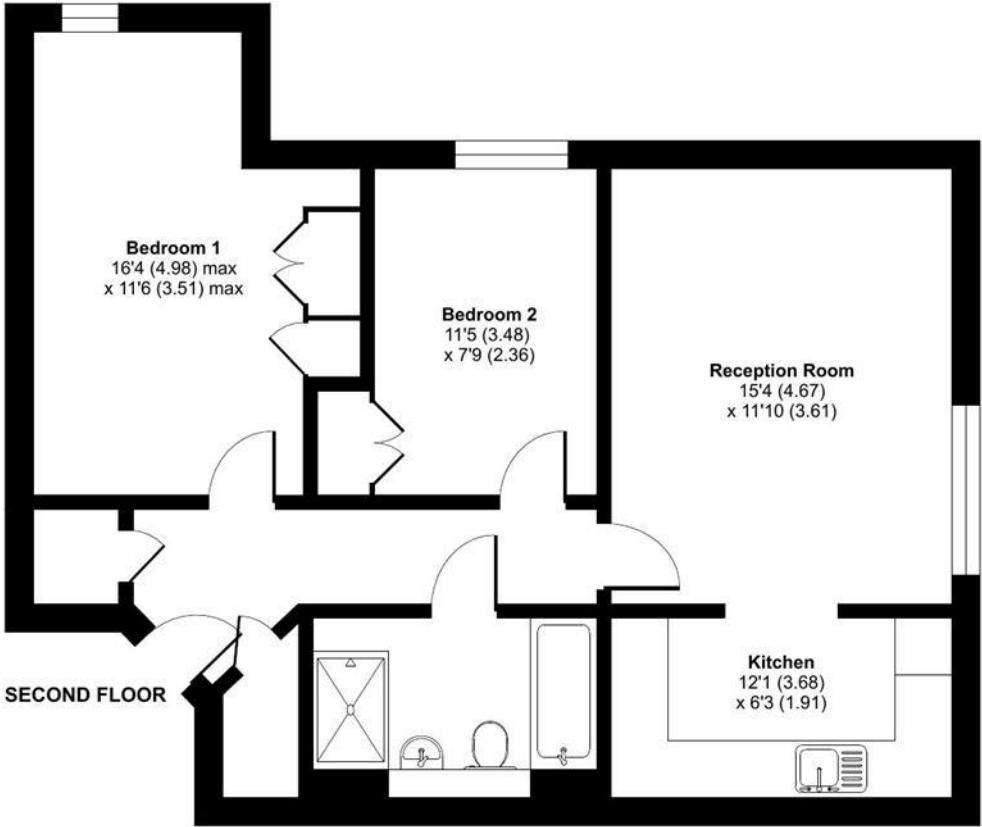






Main Road, Gidea Park, RM2 5EH

Approximate Area = 711 sq ft / 66 sq m  
For identification only - Not to scale



Floor plan produced in accordance with RICS Property Measurement Standards incorporating International Property Measurement Standards (IPMS2 Residential). © nlshecom 2023. Produced for Charles Stratton Estates Ltd. REF: 973500

Energy Efficiency Rating			Environmental Impact (CO <sub>2</sub> ) Rating		
Very energy efficient - lower running costs	Current	Potential	Very environmentally friendly - lower CO <sub>2</sub> emissions	Current	Potential
(92-100) <b>A</b>			(92-100) <b>A</b>		
(81-91) <b>B</b>			(81-91) <b>B</b>		
(69-80) <b>C</b>			(69-80) <b>C</b>		
(55-68) <b>D</b>			(55-68) <b>D</b>		
(39-54) <b>E</b>			(39-54) <b>E</b>		
(21-38) <b>F</b>			(21-38) <b>F</b>		
(1-20) <b>G</b>			(1-20) <b>G</b>		
Not energy efficient - higher running costs			Not environmentally friendly - higher CO <sub>2</sub> emissions		
England & Wales EU Directive 2002/91/EC			England & Wales EU Directive 2002/91/EC		
The energy efficiency rating is a measure of the overall efficiency of a home. The higher the rating the more energy efficient the home is and the lower the fuel bills will be.			The environmental impact rating is a measure of a home's impact on the environment in terms of carbon dioxide (CO <sub>2</sub> )		

Viewing by appointment only  
Charles Stratton Estates Ltd

192 Main Road, Gidea Park, Romford RM2 5HA

Tel: 01708 726 817 Email: [sales@charlesstratton.co.uk](mailto:sales@charlesstratton.co.uk) Website: [www.charlesstratton.co.uk/](http://www.charlesstratton.co.uk/)

Every care has been taken with the preparation of these particulars, but complete accuracy cannot be guaranteed. If there is any point, which is of particular importance to you, please obtain professional confirmation. Alternatively, we will be pleased to check the information for you. These Particulars do not constitute a contract or part of a contract. The Fixtures, Fittings & Appliances have not been tested and therefore no guarantee can be given that they are in working order. Photographs are reproduced for general information and it cannot be inferred that any item shown is included in the sale. For any information regarding broadband and mobile phone signals go to OfCom via this link - <https://checker.ofcom.org.uk/>